



ENDLESS COLLECTION





The Source Mondial Endless Collection derives its name from the almost endless options of mixing colours and pile heights to readily achieve a quality customised hand-made rug.

Our Endless Collection rugs feature durable and very densely hand-woven or hand-tufted polyester yarn which has been specially developed to have a cotton feel, but also produce fabulous lustre. These super dense and luxurious rugs bring great texture, life and comfort to any living space.

Best of all, the process of selecting the perfect Endless Collection rug is as simple as 1-2-3. Just choose your colour, choose your style and choose your size. It's as easy as that – and of course the team at Source Mondial is always on hand to assist.

THE TEAM AT SOURCE MONDIAL



THE 3 STEP PROCESS

STEP 1: CHOOSE YOUR COLOURS

Select your preferred colour in any single, 3 or 5 colour mix combination. The unique Endless Collection colour system consists of 69 single colours, which can either be selected on their own or can be mixed with up to a total of 3 or 5 colours.

STEP 2 : CHOOSE YOUR STYLE

Select either a handwoven or a handtufted quality and then choose the pile height.

HANDWOVEN OPTIONS:

Artez	20 mm	Amfore	32 mm
Aurora	45 mm	Azoro	64 mm

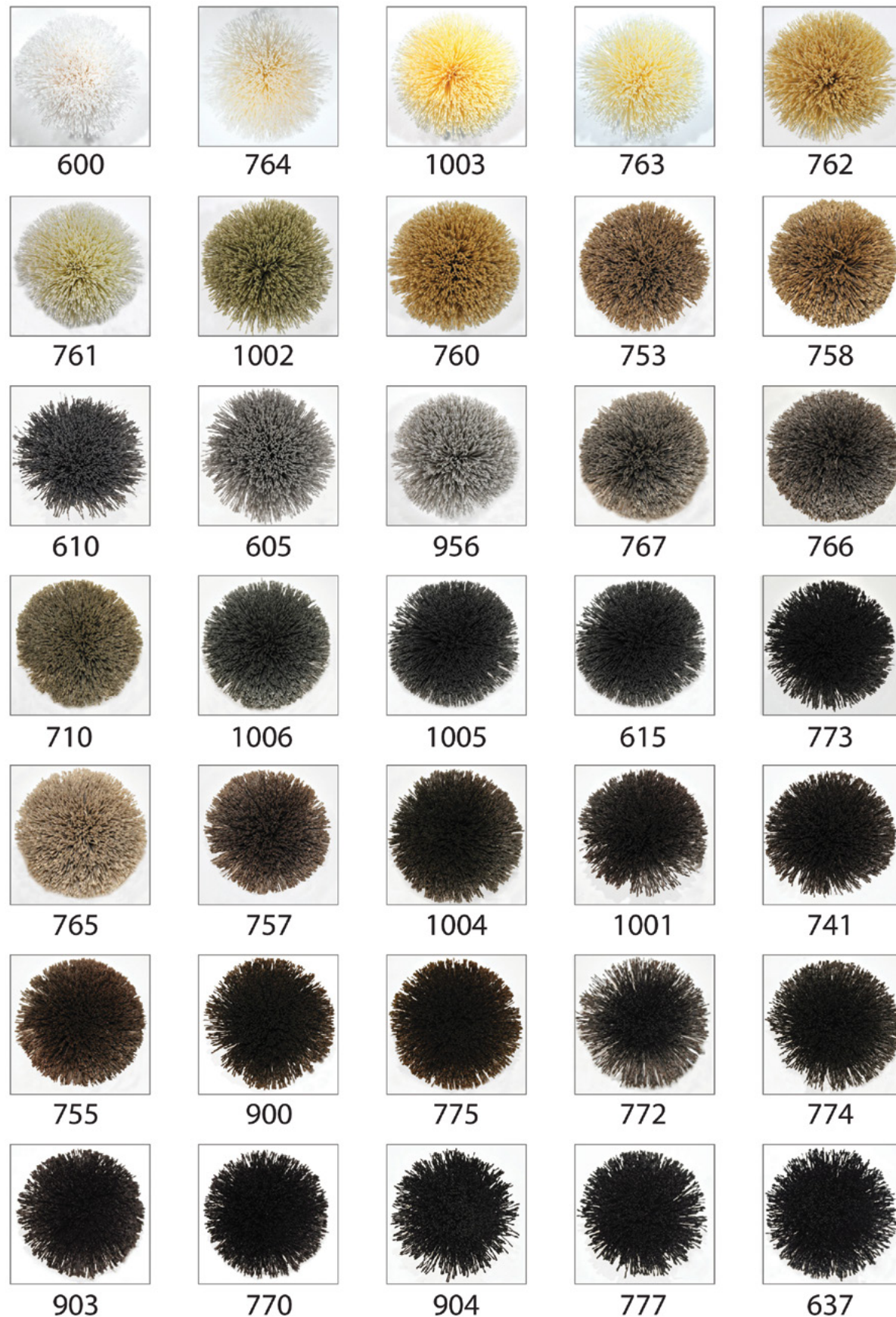
HANDTUFTED OPTIONS (SUPER DENSE):

Riva	14 mm	Risara	22 mm
Ravez	18 mm		

STEP 3: CHOOSE YOUR SIZE:

Select the dimensions and shape that suits. Dimensions of up to 5m wide x 8m long are possible. Irregular shapes available under special order.

STEP 1: CHOOSE YOUR COLOURS



AVAILABLE COLOURS



1 COLOUR EXAMPLE



3 COLOUR MIX EXAMPLE

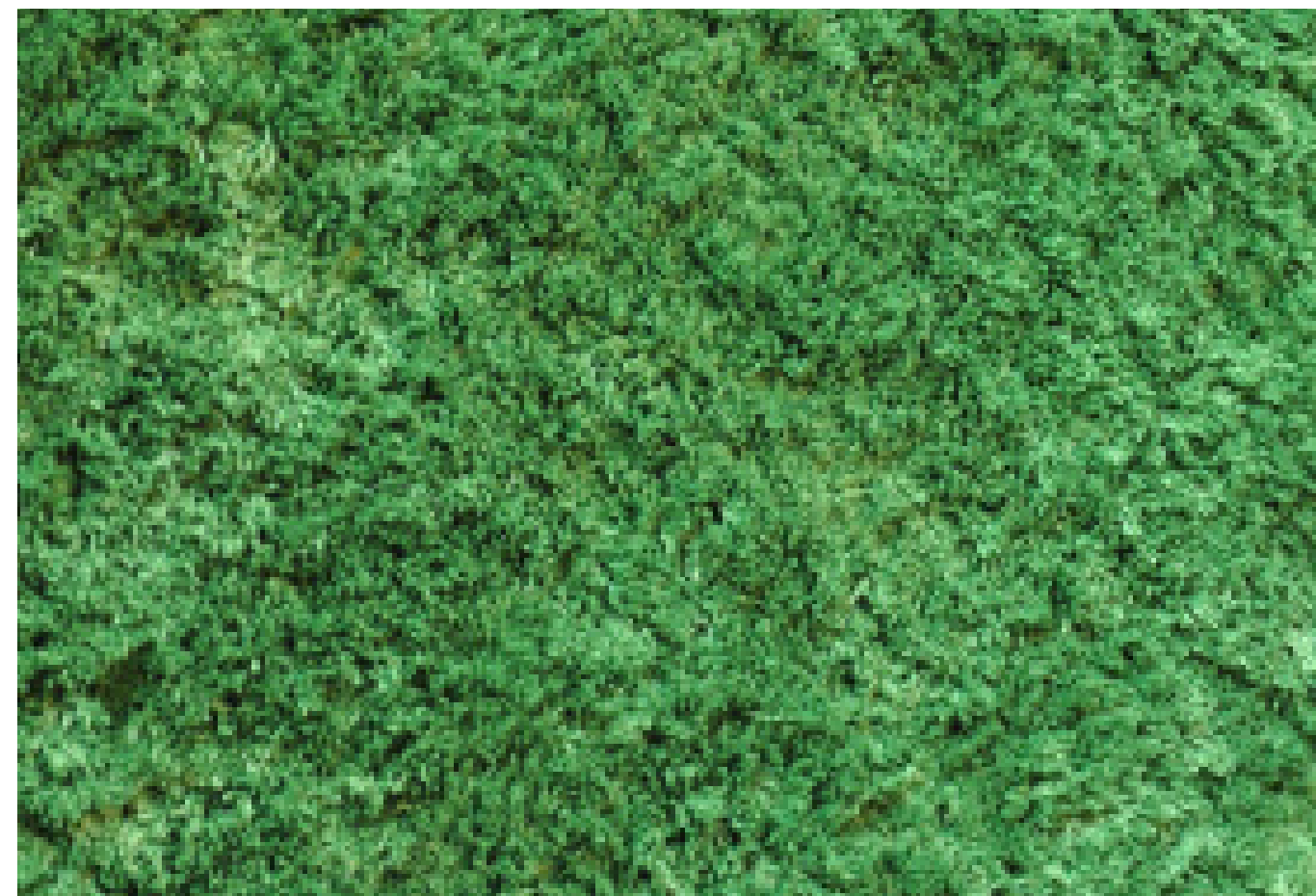


5 COLOUR MIX EXAMPLE





STEP 2: CHOOSE YOUR STYLE



ARTEZ - 20 mm PILE HANDWOVEN

Composition: 100% Matte SD Polyester Pile

Natural Latex & Secondary Cotton Backing

Production Technique: V-cut Handwoven

Pile Height: 20 mm

Pile Weight: 5.0 kg/m²

Total Weight: 6.5 kg/m²



AMFORE - 32 mm PILE HANDWOVEN

Composition: 100% Matte SD Polyester Pile

Natural Latex & Secondary Cotton Backing

Production Technique: J-cut Handwoven

Pile Height: 32 mm

Pile Weight: 5.5 kg/m²

Total Weight: 7.0 kg/m²



AURORA - 45 mm PILE HANDWOVEN

Composition: 100% Matte SD Polyester Pile

Natural Latex & Secondary Cotton Backing

Production Technique: J-cut Handwoven

Pile Height: 45 mm

Pile Weight: 5.5 kg/m²

Total Weight: 7.0 kg/m²



AZORO - 64 mm PILE HANDWOVEN

Composition: 100% Matte SD Polyester Pile

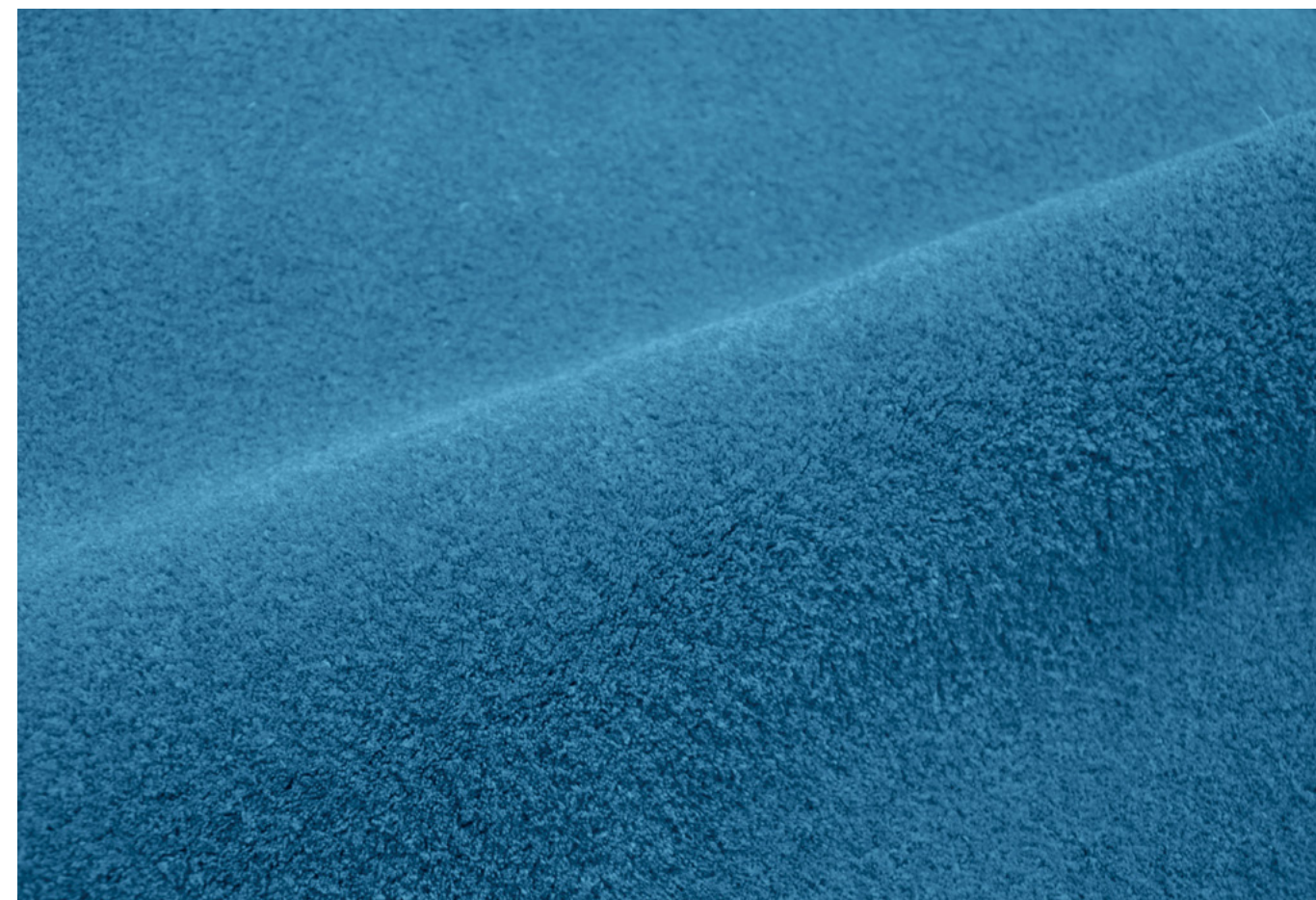
Natural Latex & Secondary Cotton Backing

Production Technique: J-cut Handwoven

Pile Height: 64 mm

Pile Weight: 6.5 kg/m²

Total Weight: 8.0 kg/m²



ULTRA DENSE - 14-22 mm PILE HANDTUFTED

Riva 14 mm / Ravez 18 mm / Risara 22 mm

Composition: 100% Matte SD Polyester Pile

Natural Latex & Secondary Cotton Backing

Production Technique: Handtufted 42 tufts per inch²

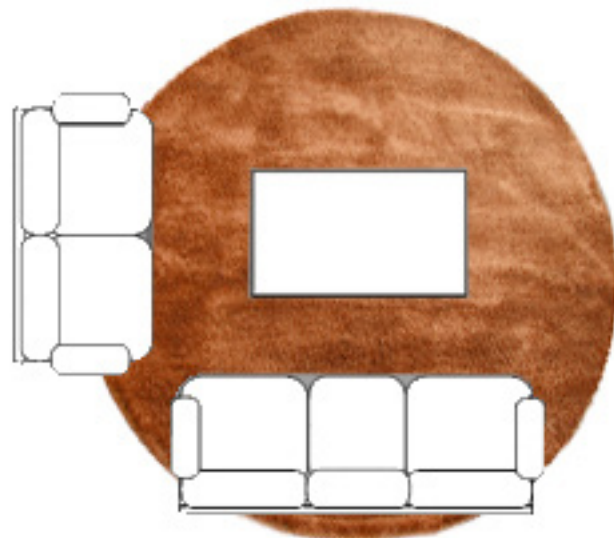
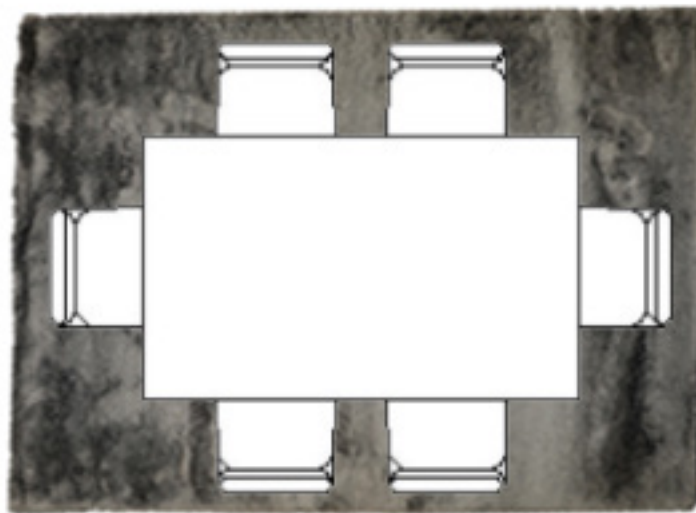
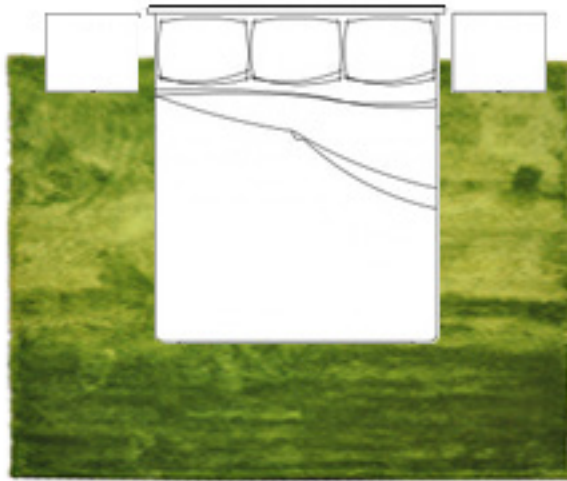
Pile Height: 14 - 22 mm

Pile Weight: 5.25 - 6.5 kg/m²

Total Weight: 7.75 - 9 kg/m²



STEP 3: CHOOSE YOUR SIZE:



PRODUCT SUMMARY

COLOUR

Single/UNI Colours: 69 UNI colours available
Colour Mixes: 3 mix or 5 mix options

PILE HEIGHT

Handwoven: Artez 20 mm, Amfore 32 mm, Aurora 45 mm, Azoro 64 mm
Handtufted: Guntufted, Riva 14mm, Ravez 18mm, Risara 22mm

SIZES

Size: Up to 5m wide & 8 m long
Oversize: Available under special order

SHAPES

Shapes: Circles, squares, rectangles & ovals
Irregular Shapes: Available under special order

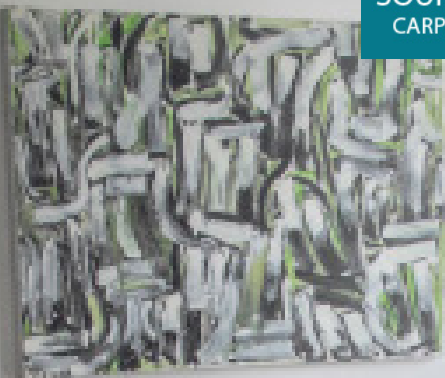
SAMPLING

Colour Poms: Large mixed colour poms available on order
Colour Swatch: Handwoven/tufted 30x30 swatches available on order

VARIATION

Endless Collection rugs are handwoven/tufted to order, and are produced from batch & hand dyed yarn.
Variation of up to 5% in size or colour may occur.





+64 9 377 3068 | 70 Stanley Street, Parnell, 1010
0800 767 847 | MDC - 323 Madras St, 8013 | Christchurch
P.O. Box 31741 Milford, 0741 | Auckland, New Zealand
sourcemondial.co.nz | sisal.co.nz