



INDOOR/OUTDOOR





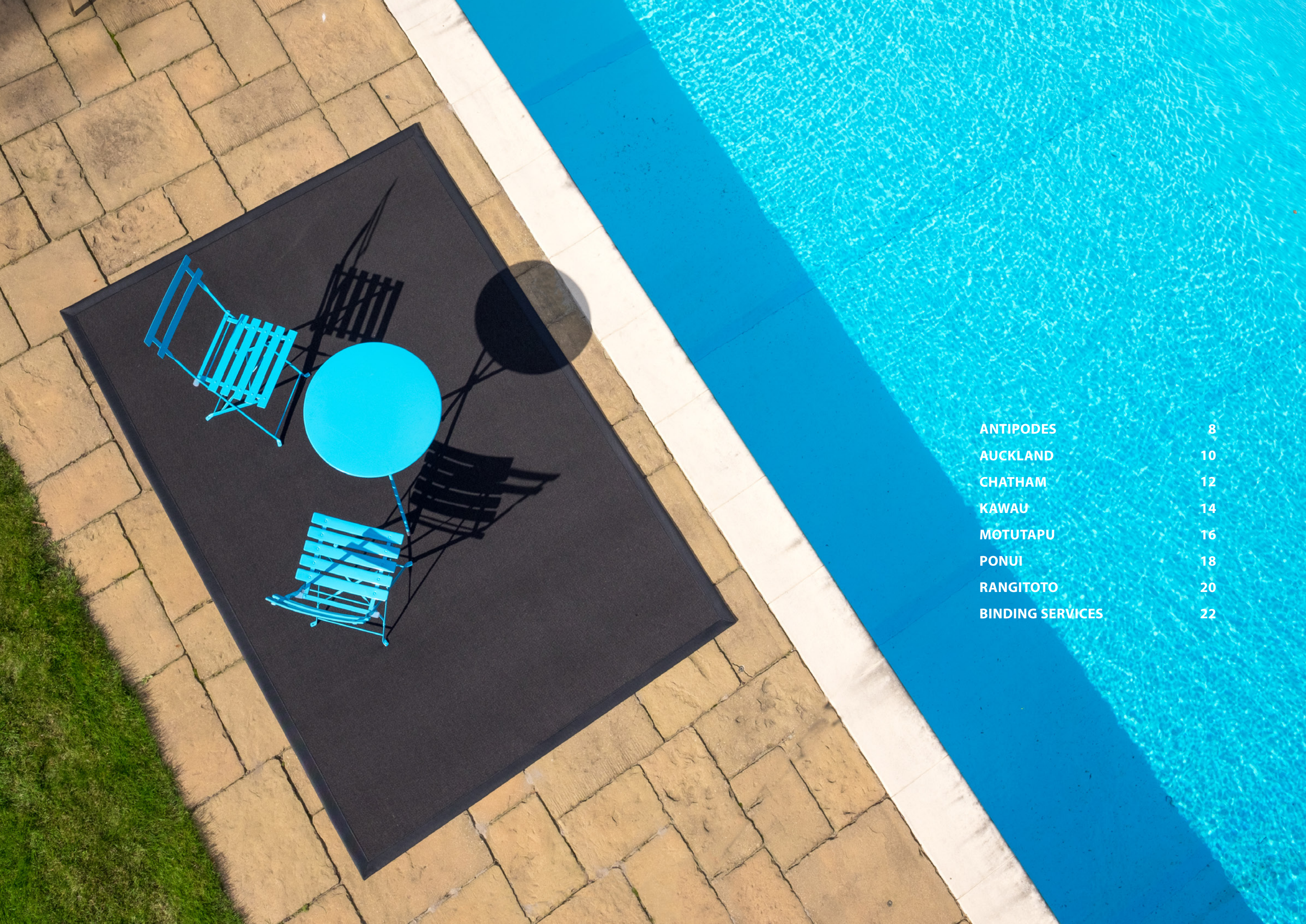
Source Mondial offers an excellent range of versatile and durable indoor/outdoor products which can either be installed as wall-to-wall carpet or used as an indoor or outdoor rug. As an outdoor rug these products not only provide an impressive extension to indoor living spaces, but are also perfect for defining an outdoor living space.

All our indoor/outdoor products are flatwoven in 100% solution dyed polypropylene and are rated for heavy commercial usage, which means they wear exceptionally well and have excellent appearance retention. They also have the added benefits of being easy to clean & maintain, are 100% waterproof and are UV & slip resistant.

In terms of getting an indoor/outdoor product bound into a rug, Source Mondial offers an extensive binding service. Depending on the application, options include concealed edge, overlocking and border binding in a wide range of binding widths, colours and materials, including binding suitable for the outdoors.

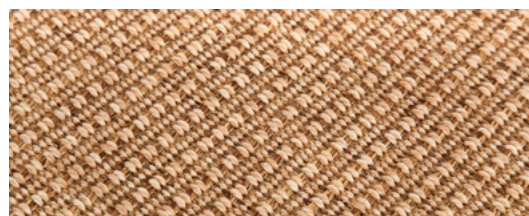
Our experienced team would be pleased to assist you with your product selection and with installation of this wall-to-wall, or with your binding options for achieving your perfectly bound rug.

THE TEAM AT SOURCE MONDIAL

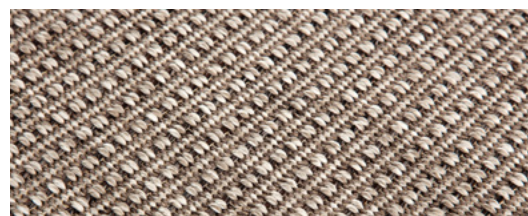


ANTIPODES	8
AUCKLAND	10
CHATHAM	12
KAWAU	14
MOTUTAPU	16
PONUI	18
RANGITOTO	20
BINDING SERVICES	22

ANTIPODES



4125



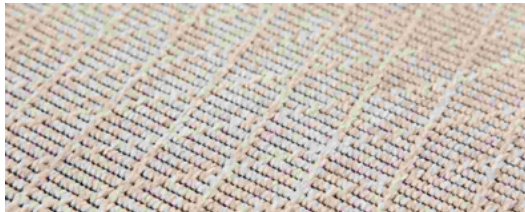
4111

TECHNICAL SPECIFICATIONS

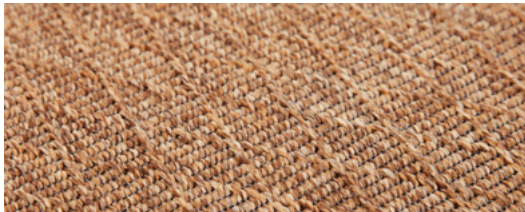
Style:	Flat Woven, Contract Loop Pile
Fibre:	100% Polypropylene
Secondary Backing:	SBR free latex
Width:	400cm
Pile Weight:	± 1,100 g/m ²
Total Weight:	± 1,640 g/m ²
Total Height:	± 5.0 mm
Thermal Resistance:	0.12 m ² k/w
Underfloor Heating:	Suitable
Fire Rating:	Dfl-s1
Light Fastness:	5-6
Water Resistance:	4-5
Sound Insulation:	22db
Wearing Class:	23 – Heavy Domestic



AUCKLAND



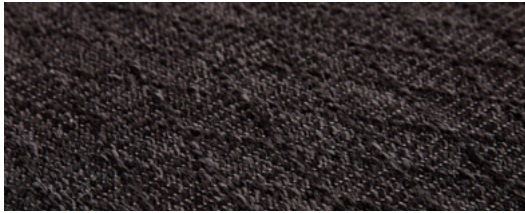
622-22-131



622-16-131



622-31-131



622-40-131

TECHNICAL SPECIFICATIONS	
Style:	Flat Woven, Loop Pile
Fibre:	100% Polypropylene
Secondary Backing:	Gel backing
Width:	400cm
Pile Weight:	± 460 g/m ²
Total Weight:	± 1,520 g/m ²
Total Height:	± 3.2 mm
Thermal Resistance:	0.12 m ² k/w
Underfloor Heating:	Suitable
Fire Rating:	Dfl-s1
Wearing Class:	33 – Intensive Commercial



CHATHAM



4325



4311

CHATHAM	TECHNICAL SPECIFICATIONS
Style:	Flat Woven, Contract Loop Pile
Fibre:	100% Polypropylene
Secondary Backing:	SBR free latex
Width:	400cm
Pile Weight:	± 1,100 g/m ²
Total Weight:	± 1,640 g/m ²
Total Height:	± 5.0 mm
Thermal Resistance:	0.12 m ² k/w
Underfloor Heating:	Suitable
Fire Rating:	Dfl-s1
Light Fastness:	5-6
Water Resistance:	4-5
Sound Insulation:	22db
Wearing Class:	23 – Heavy Domestic



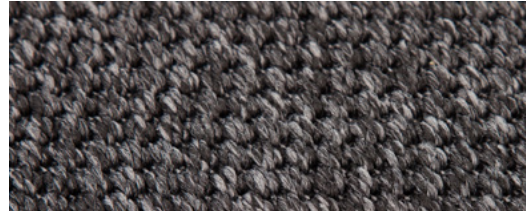
KAWAU



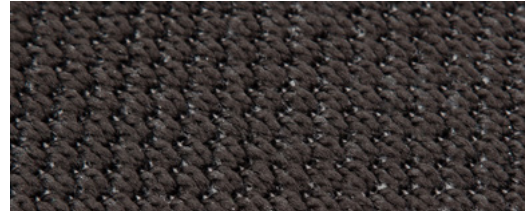
69-13



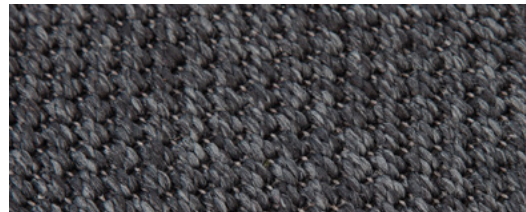
69-31



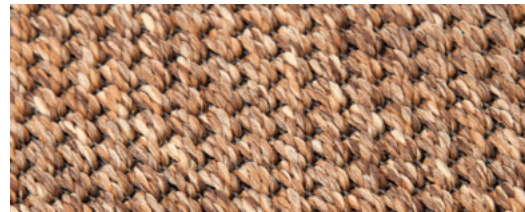
69-40



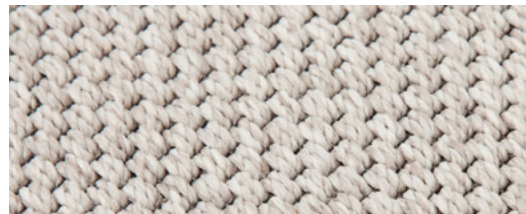
69-43



69-37



69-16



69-22

TECHNICAL SPECIFICATIONS

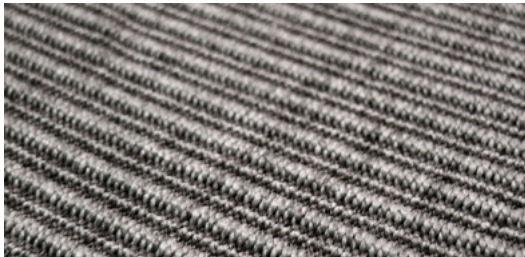
Style:	Flat Woven, Contract Loop Pile
Fibre:	100% Polypropylene
Secondary Backing:	Gel Backing
Width:	400cm
Pile Weight:	± 715 g/m ²
Total Weight:	± 1,655 g/m ²
Total Height:	± 5.1 mm
Underfloor Heating:	Suitable
Fire Rating:	Dfl-s1
Wearing Class:	33 – Intensive Commercial



MOTUTAPU



ROBMO-2



ROBMO-3

TECHNICAL SPECIFICATIONS	
Style:	Flat Woven, Contract Loop Pile
Fibre:	100% Polypropylene
Secondary Backing:	Latex
Width:	400cm
Pile Weight:	± 1,100 g/m ²
Total Weight:	± 1,640 g/m ²
Total Height:	± 5 mm
Underfloor Heating:	Suitable
Fire Rating:	Dfl-s1
Wearing Class:	23 – Intensive Use



PONU



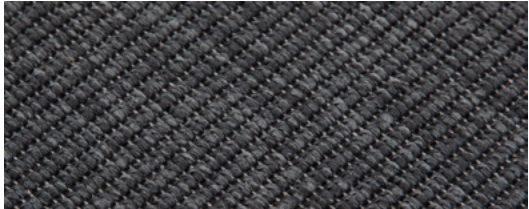
67-13



67-16



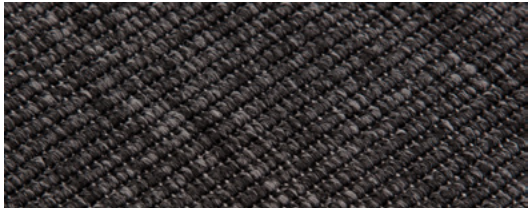
67-31



67-37



67-43



67-40

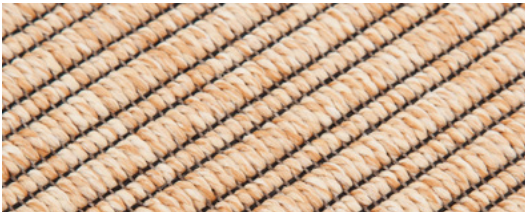


67-22

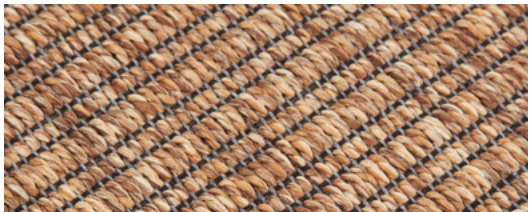
TECHNICAL SPECIFICATIONS	
Style:	Flat Woven, Contract Loop Pile
Fibre:	100% Polypropylene
Secondary Backing:	Gel Backing
Width:	400cm
Pile Weight:	± 800 g/m²
Total Weight:	± 1,530 g/m²
Total Height:	± 4.4 mm
Underfloor Heating:	Suitable
Fire Rating:	Dfl-s1
Wearing Class:	33 - Intensive Commercial



RANGITOTO



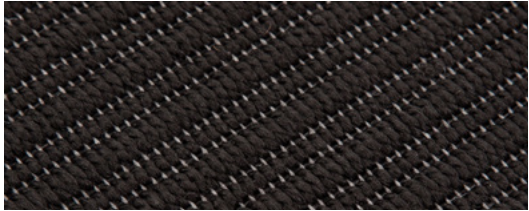
68-13



68-16



68-37



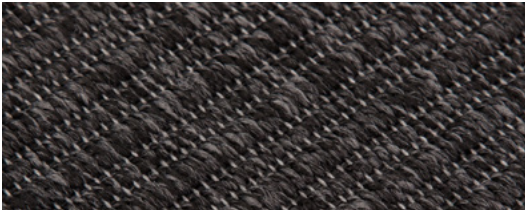
68-43



68-31



68-22



68-40

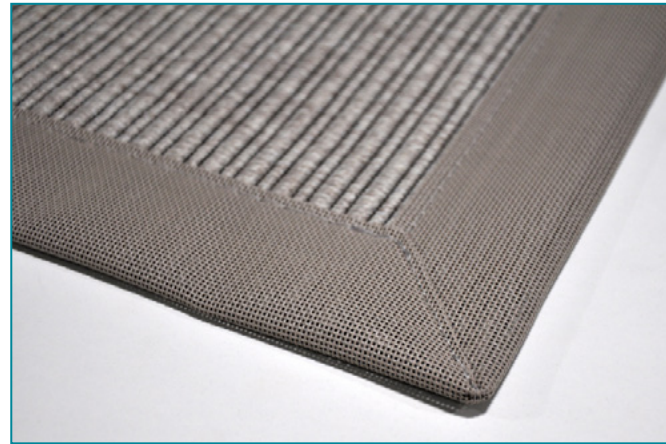
TECHNICAL SPECIFICATIONS	
Style:	Flat Woven, Contract Loop Pile
Fibre:	100% Polypropylene
Secondary Backing:	Gel Backing
Width:	400cm
Pile Weight:	± 810 g/m ²
Total Weight:	± 1,515 g/m ²
Total Height:	± 4.9 mm
Underfloor Heating:	Suitable
Fire Rating:	Dfl-s1
Wearing Class:	33 – Intensive Commercial



BINDING OPTIONS

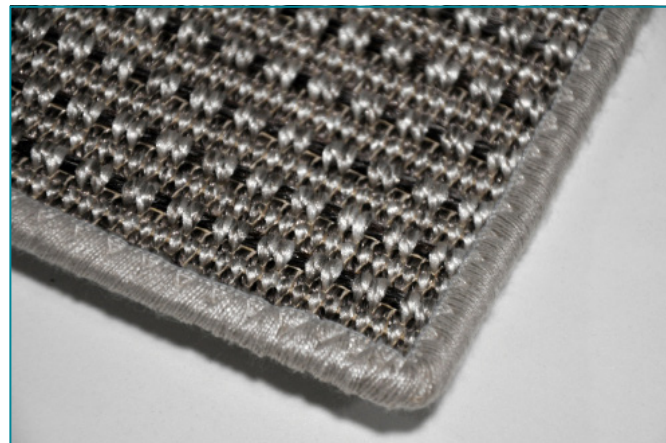
All of our indoor/outdoor products can be bound into a rug of your preferred size and binding finish. There are plenty of great options available, and our experienced team are on hand to advise on the best binding options for you.

Depending on whether you would like to use your rug indoors or outdoors, options include:



MITRED

COTTON, LINEN, SYNTHETIC



OVERLOCKED

NYLON, WOOL, SYNTHETIC



CONCEALED EDGE

OVERTURNED WITH
UNDERLAY INSERT



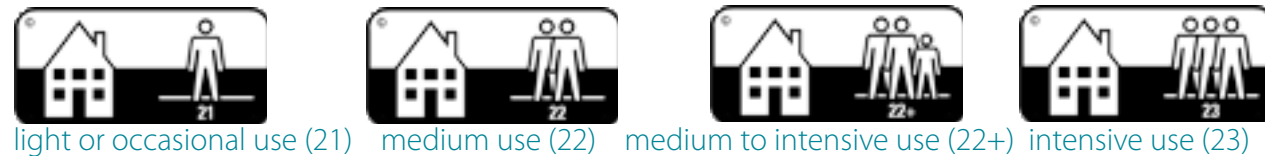
EUROPEAN FLOOR COVERING SYMBOLS

Resilient, textile and laminate floor coverings have a number of specific characteristics and are grouped into a number of use classes. A standardised system of graphic symbols has been developed in order to make the classification and to render these specific characteristics easily understandable and recognisable for the consumer.

USE CLASS

Use class: domestic or commercial A distinction is made between carpets suitable for domestic use and carpets suitable for commercial use. In practice the latter means that the carpets can be used in areas with heavy traffic such as shops, hotels, offices...

Domestic



Commercial Use



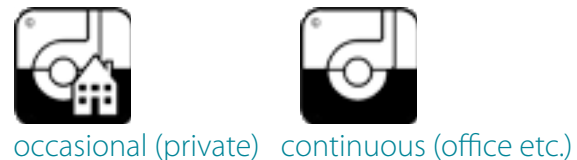
LUXURY CLASS

Within each of the use classes carpets may vary in luxury. This can be expressed by the stet symbols. The highest luxury rating is class 5 with 5 crowns.



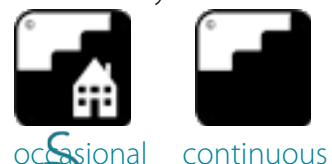
CASTOR CHAIRS

If castor chairs are used, the carpet pile, especially in those places where the chairs are used, is under extreme stress. Only carpets fulfilling the higher requirements according to a specific test procedure will be allowed to use these symbols.



STAIRS

If carpets are used on stairs, those parts of the carpet on the edge of a step are under extreme stress. Based on specific test conditions it can be decided whether a carpet can be used on stairs continuously or only occasionally.



UNDERFLOOR HEATING

If a carpet is installed over an underfloor heating system the carpet has to have minimum insulating properties. Thermal resistance has to be lower than 0.17 m² K/W. The symbol indicates that the carpet can be used in combination with underfloor heating systems.



SLIP RESISTANCE

According to EN 14041 floor coverings have to meet certain safety requirements. One of them is slip resistance. If this claim is made by the producer, the floor covering intended to be used under dry and non-contaminated (clean) conditions shall have a dynamic coefficient of friction > 0.30. In this case, symbol DS shall be used. In all other cases, symbol NPD, No Performance Declared, has to be used. As shown by extensive test procedures all textile pile carpets floor coverings meet the criteria for DS.



ANTISTATIC

This symbol indicates that the carpet has "antistatic" properties. This means that static electricity after walking on the carpet (body voltage) is immediately discharged.



LIGHT FASTNESS

This icon indicates that the carpet meets the basic requirements for light-fastness (> = 5, for pastel shades > = 4) in accordance with test methods EN ISO 105-B02.ns



REACTION TO FIRE

Fire classes D, C and B are subdivided in the class's s1 and s2. Smoke density in case of s1 is lower than in case of s2 meaning the product has an overall better performance within the same fire class. Which fire class has to be met depends on specific national regulations. In general, Efl is sufficient for private application. Fire classes Cfl and Bfl are generally used only in the contract area.

If the producer cannot give any information about the fire behaviour of his product he has to label the product with the Ffl pictogram.







+64 9 377 3068 | 70 Stanley Street, Parnell, 1010
0800 767 847 | MDC - 323 Madras St, 8013 | Christchurch
P.O. Box 31741 Milford, 0741 | Auckland, New Zealand
sourcemondial.co.nz | sisal.co.nz