



NATURAL SISAL





Sisal carpets and rugs are a classic flooring solution which offers natural colours and textures that exude elegant, stylish and aesthetically pleasing characteristics.

Suitable as wall to wall carpet, area rugs or as a feature runner for floors and stairs, sisal is a favourite amongst interior designers.

The team at Source Mondial is proud to offer an extensive range of sisal styles and textures woven from natural fibres sourced from the finest raw material, the African agave plant.

These sisal fibres offer an impressive array of features and benefits. In addition to being constructed from a sustainable, renewable and natural resource, sisal is moth & rot resistant, anti-static, anti-bacterial, dust & mite resistant, is a great heat and sound insulator, regulates environmental moisture and is biodegradable.

When it comes to your home, sisal is practical and durable, has a stunning natural & textured aesthetic and will work well in your living spaces for very many years to come.

And if you'd like to create your own bespoke rug, Source Mondial offers a full binding service. We look forward to assisting you with selecting your favourite style and advising you on binding options.

THE TEAM AT SOURCE MONDIAL



FINE WEAVES

BERNAY	8
CAEN	10
COLMAR	12
LIMOGES	14
MONTPELLIER	16
MONTLUCON	18
MOULINS	20
NANTERRE	22
NICE	24
NIMES	26
NORMANDY	28
ROUEN	30
ST. TROPEZ	32
TOURS	34

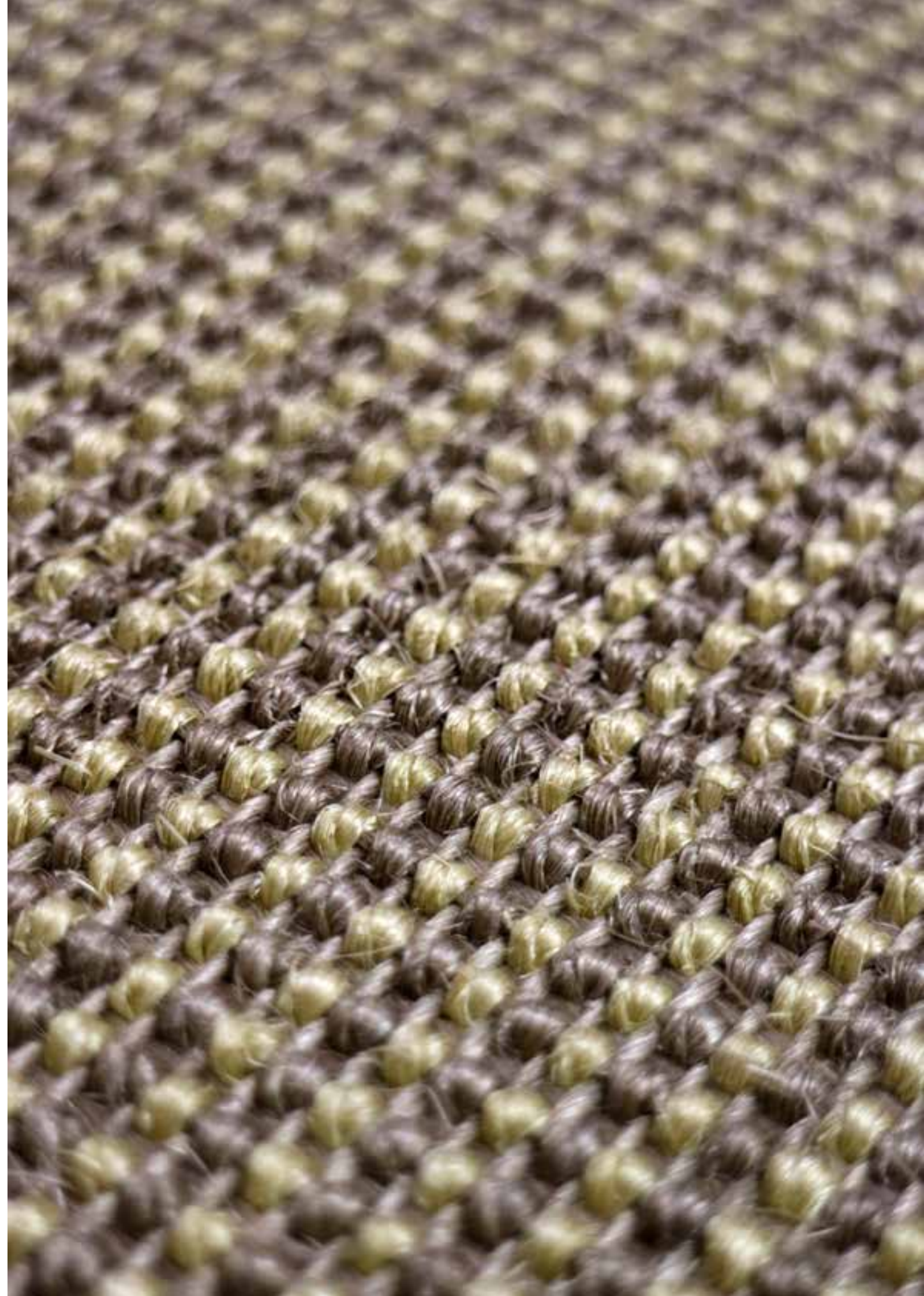
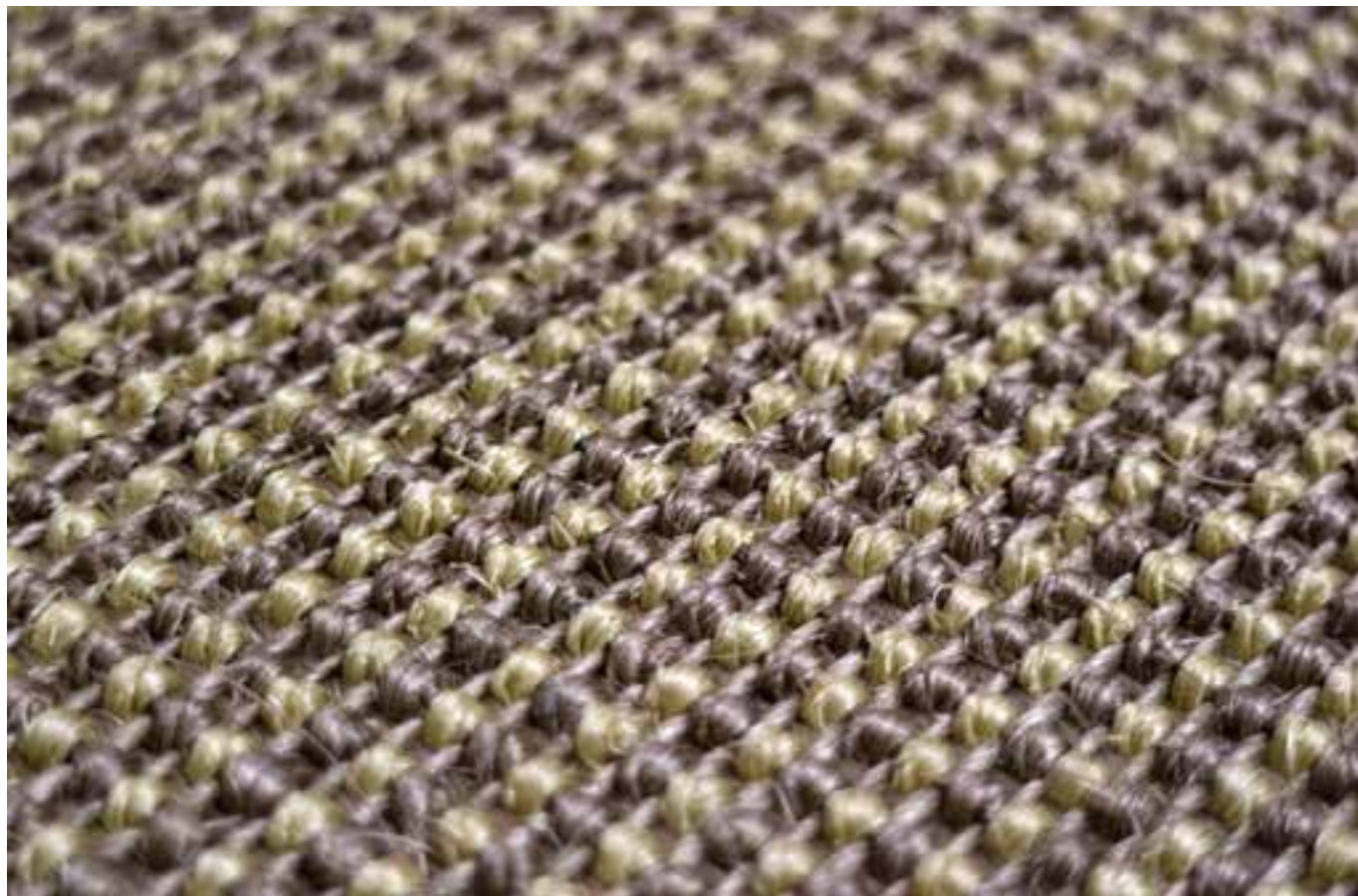
BERNAY



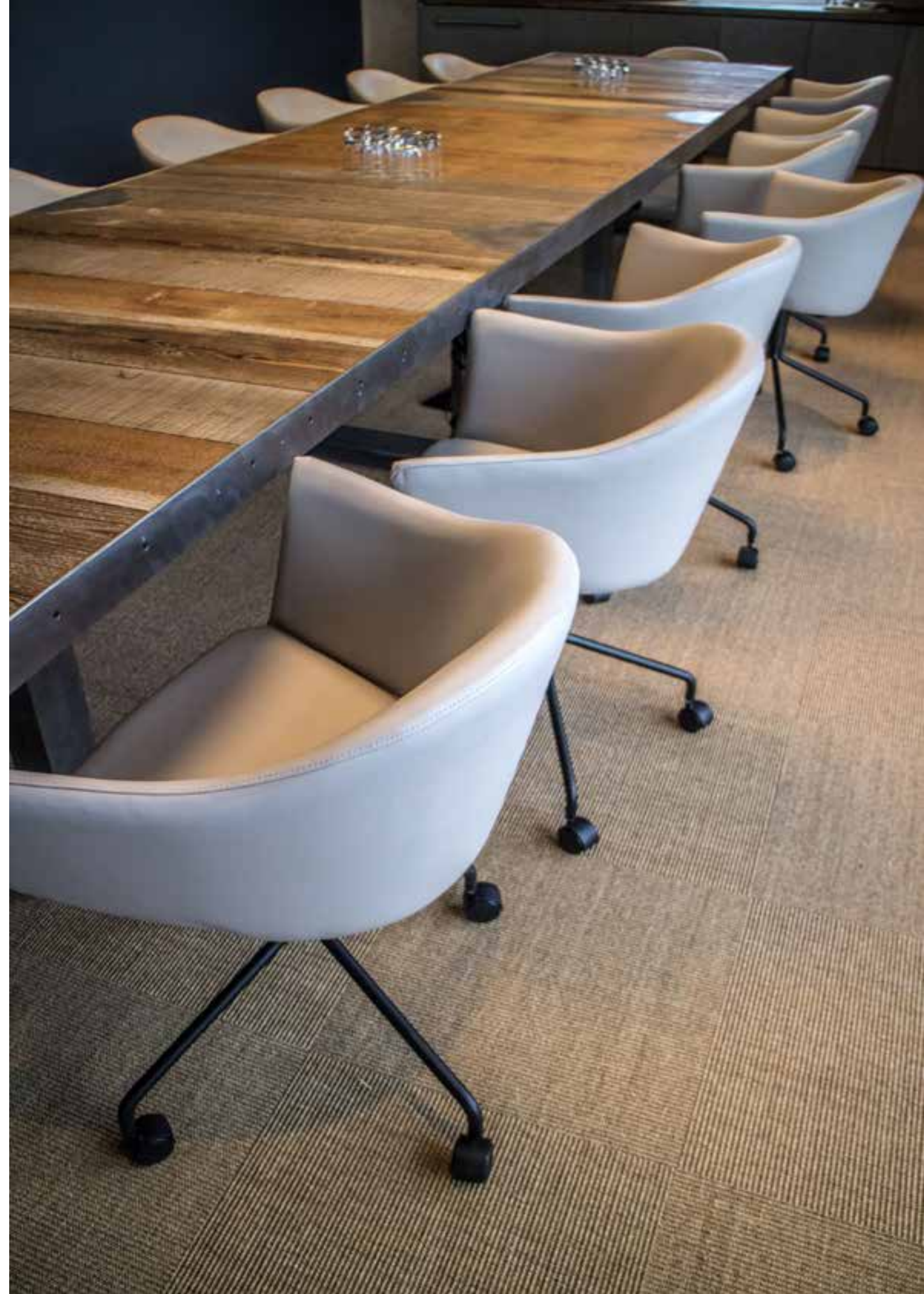
CAEN



COLMAR



LIMOGES (Tiles)



MONTPELLIER



MONTLUCON



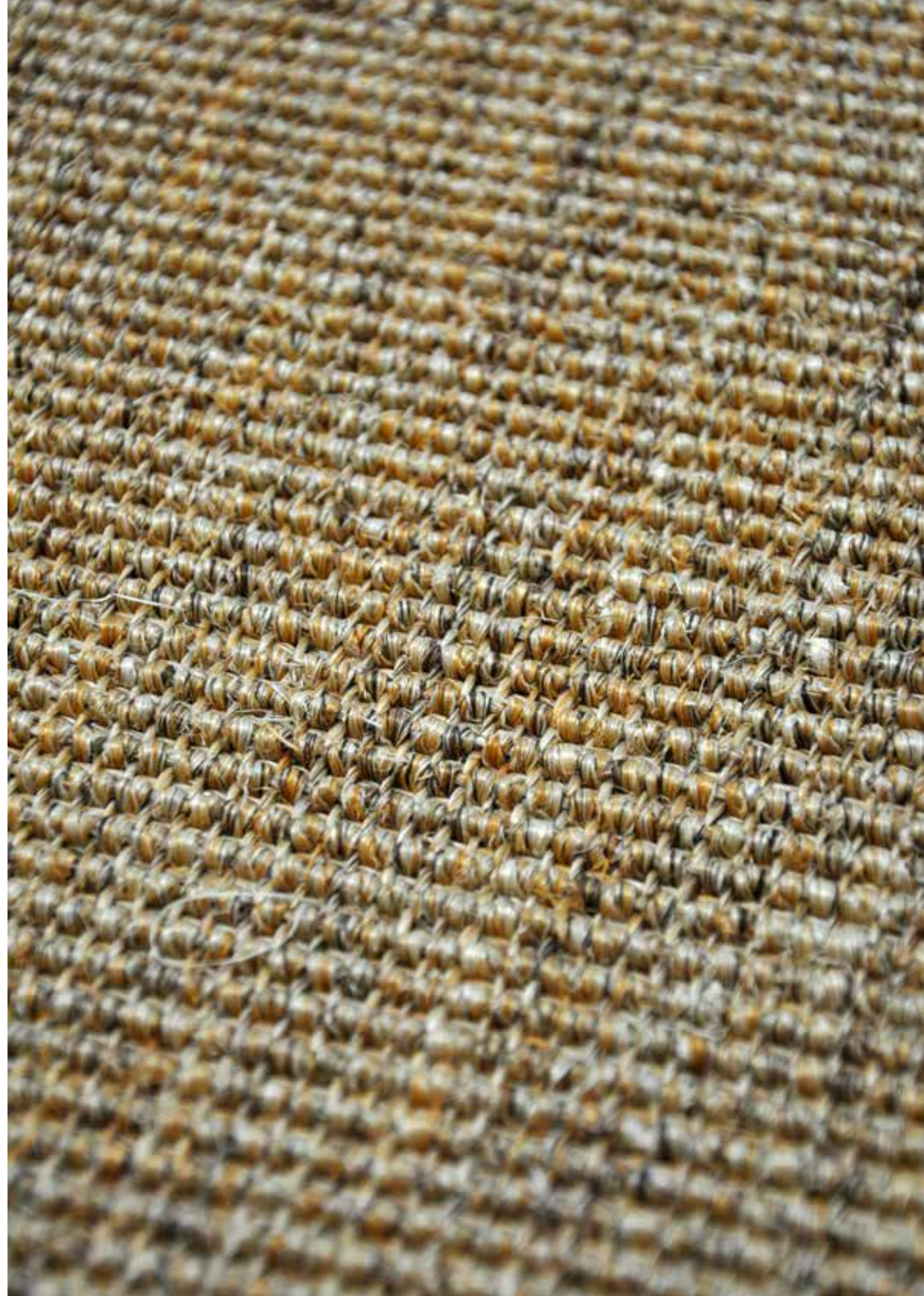
MOULINS (Tiles)



NANTERRE



NICE



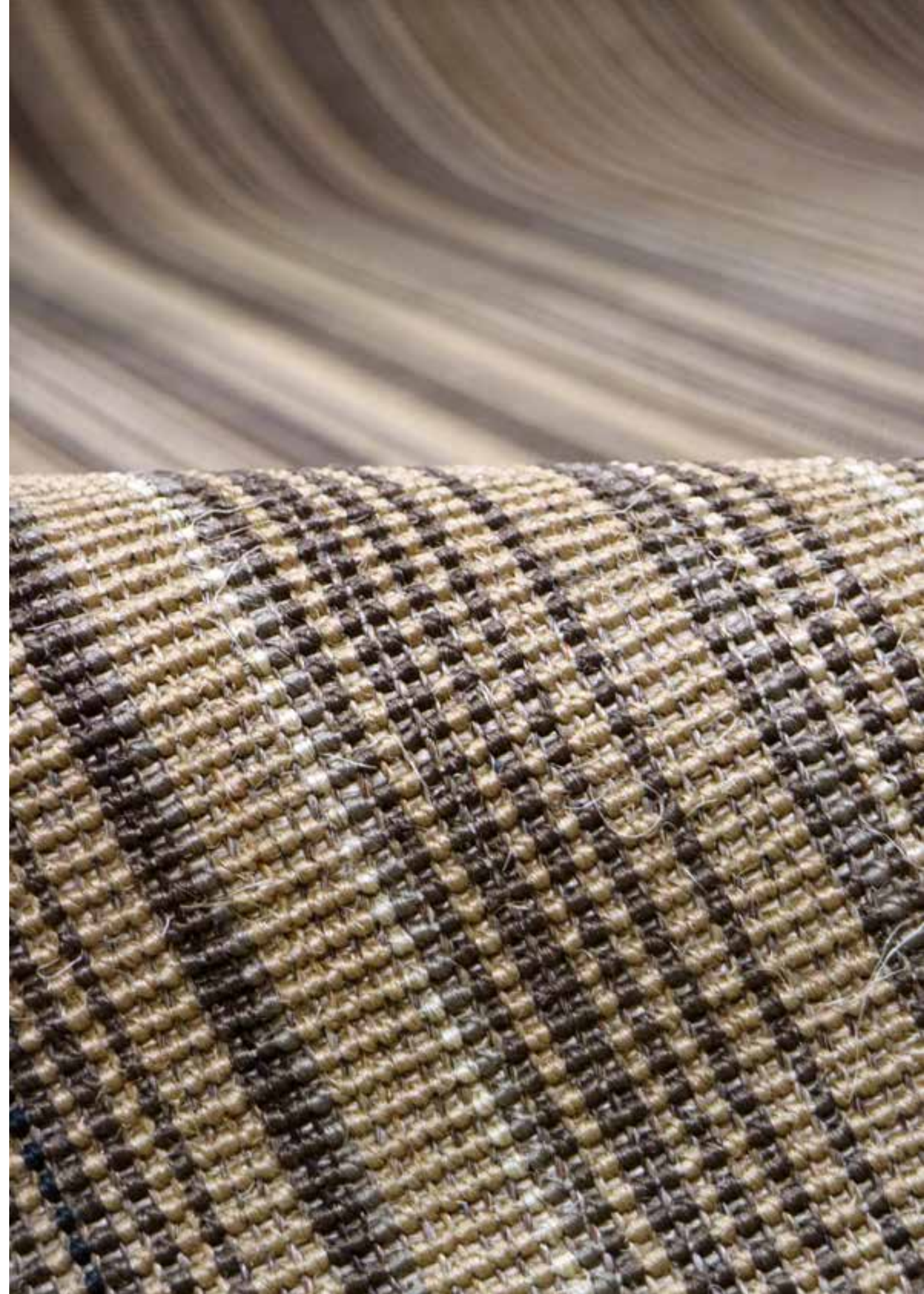
NIMES



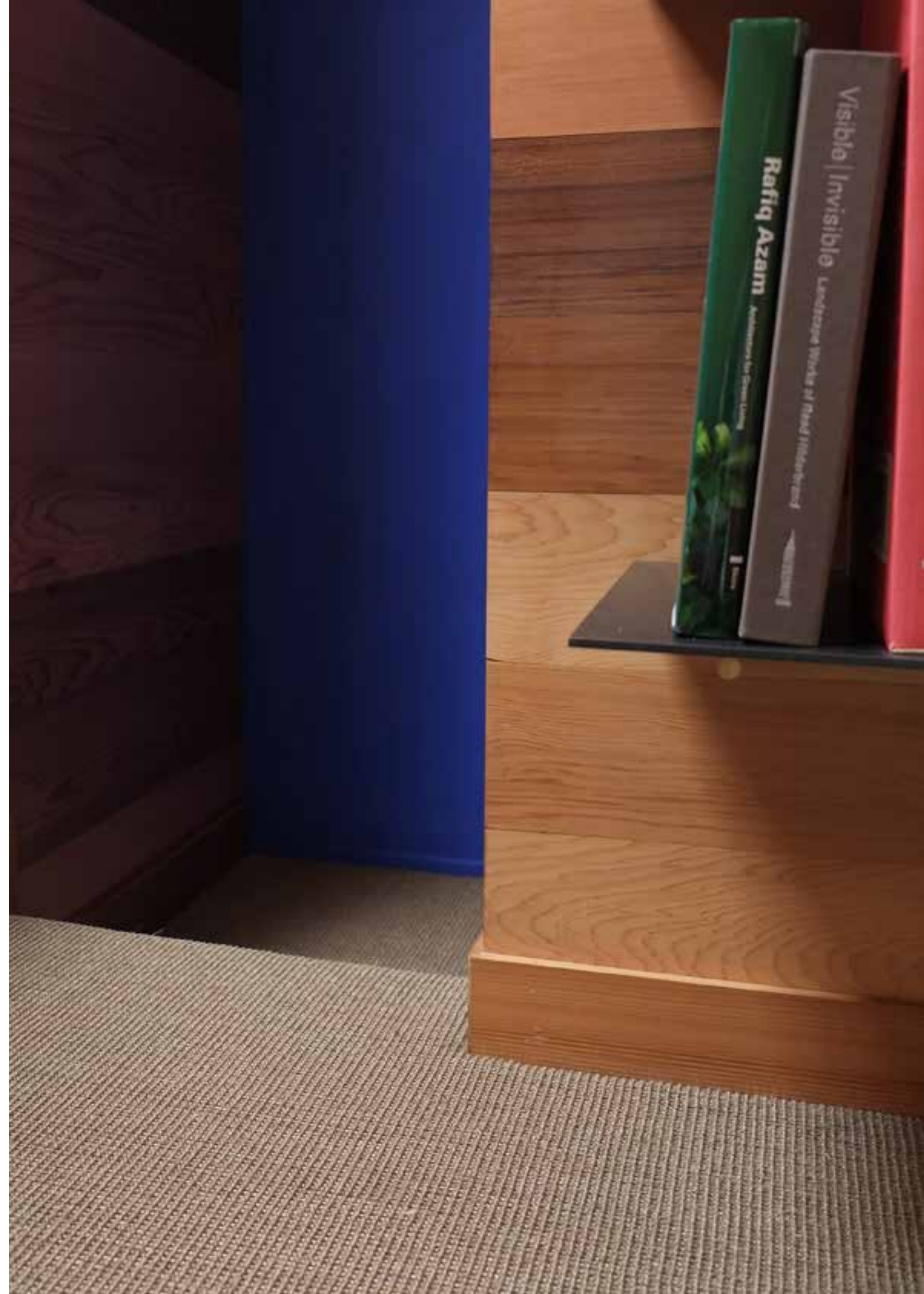
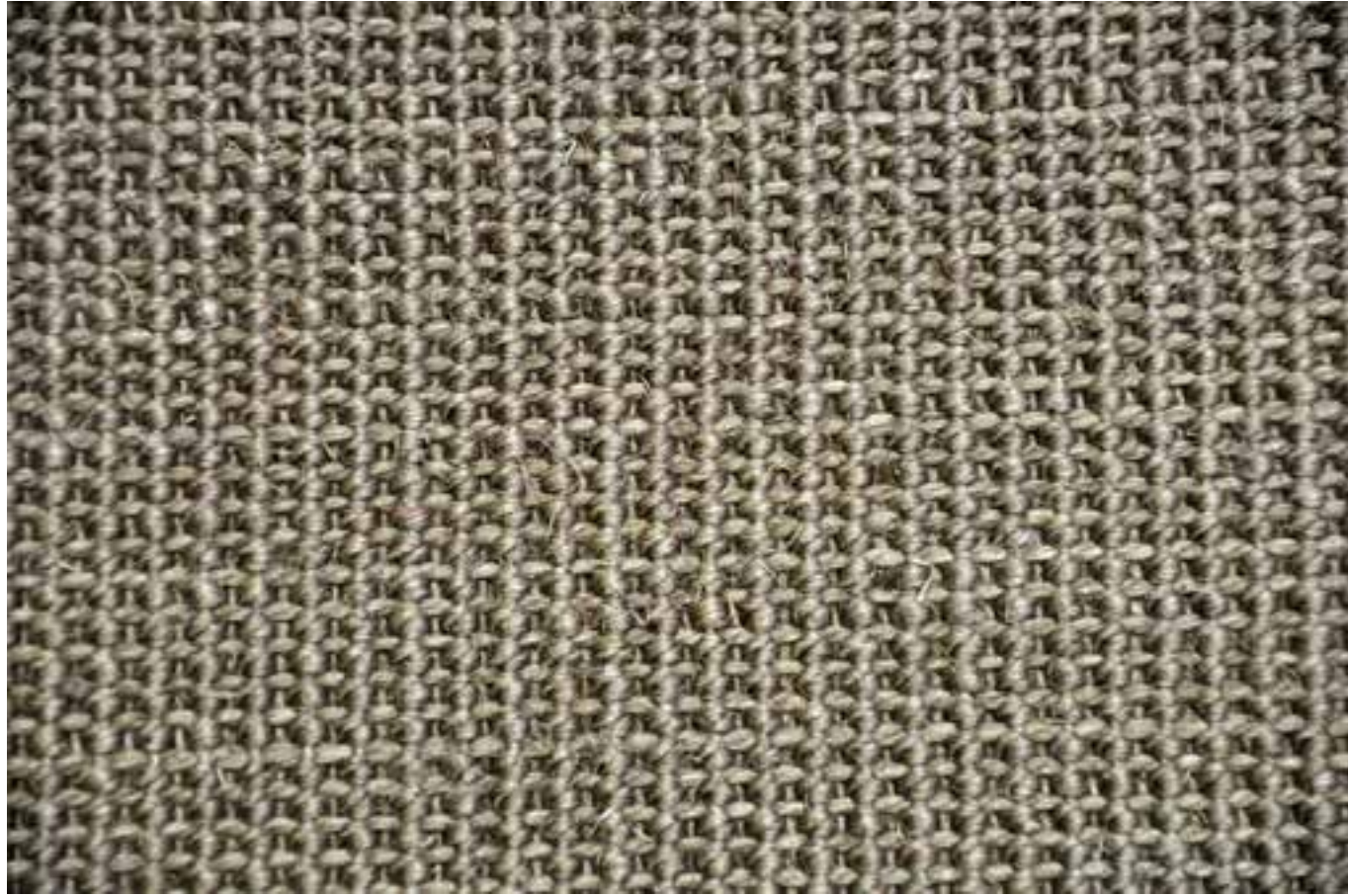
NORMANDY



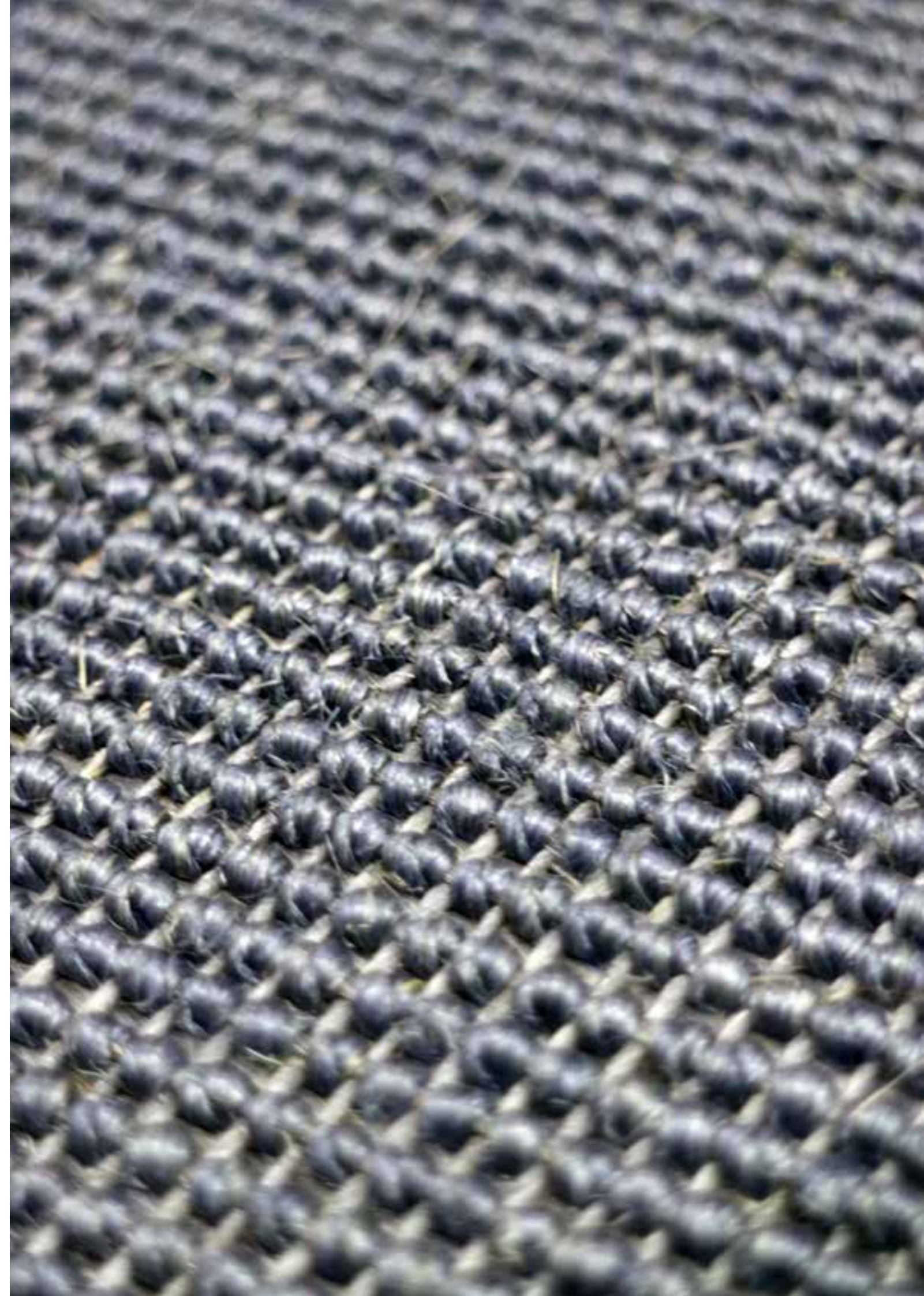
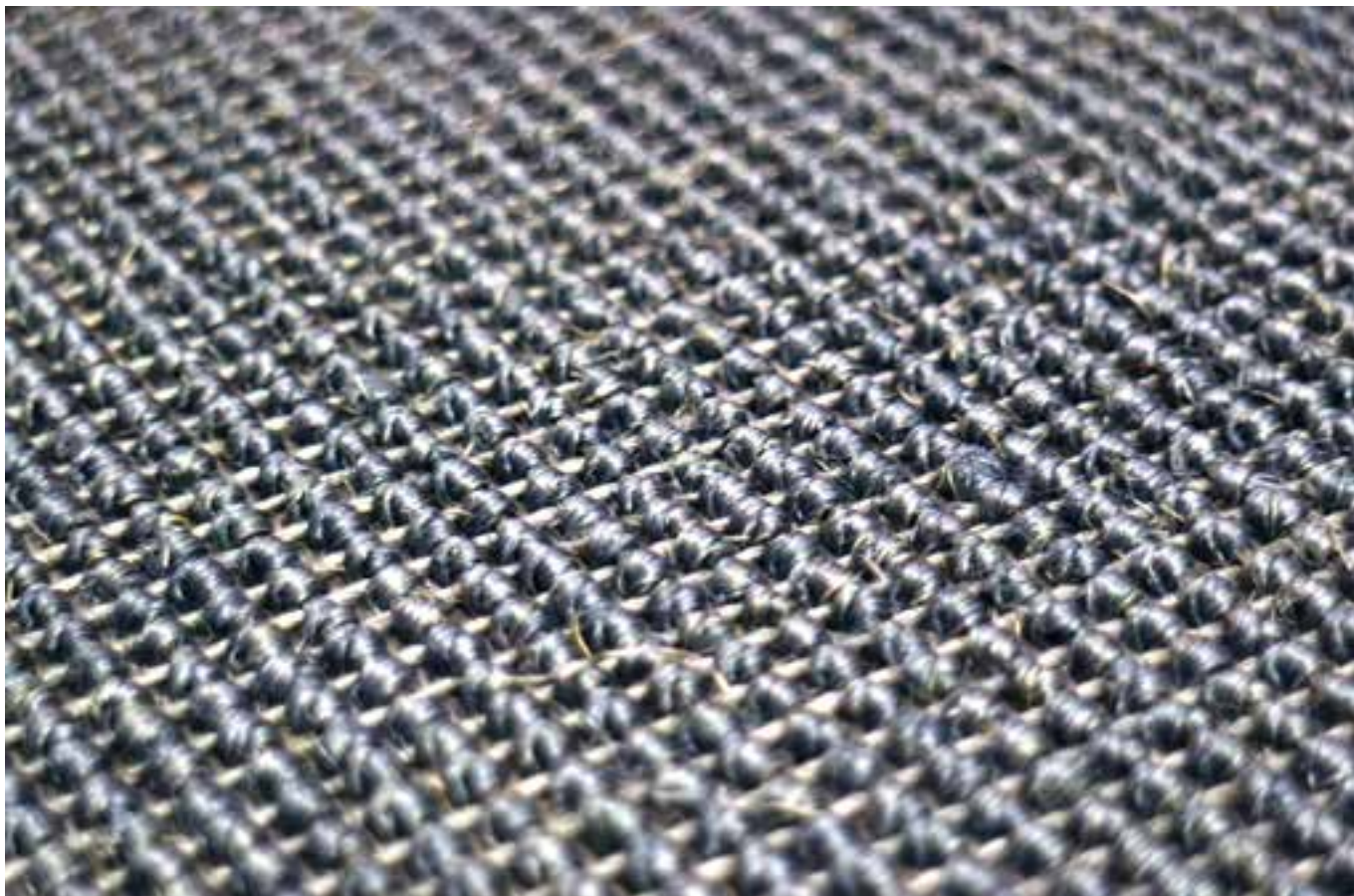
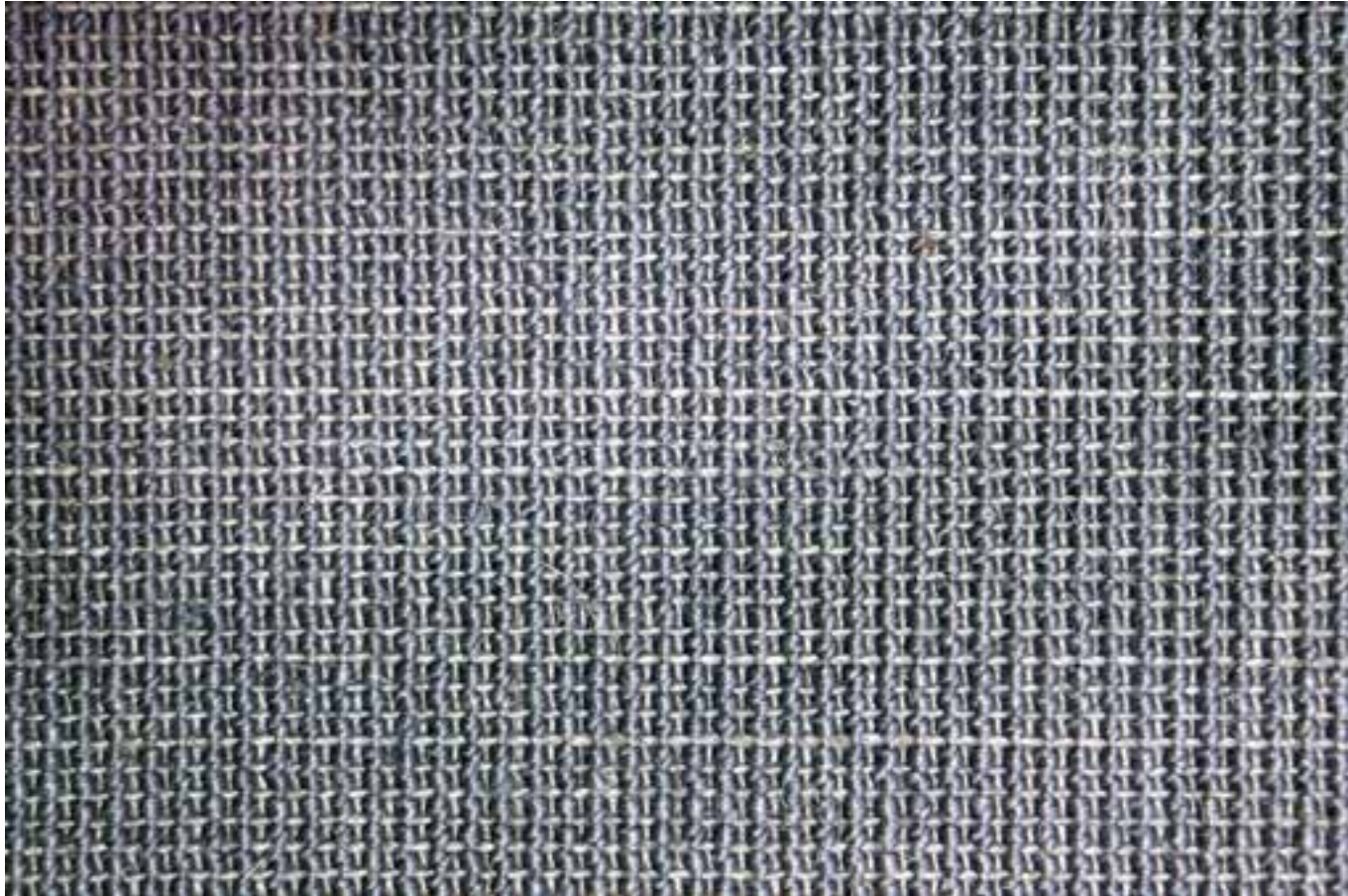
ROUEN



ST. TROPEZ



TOURS

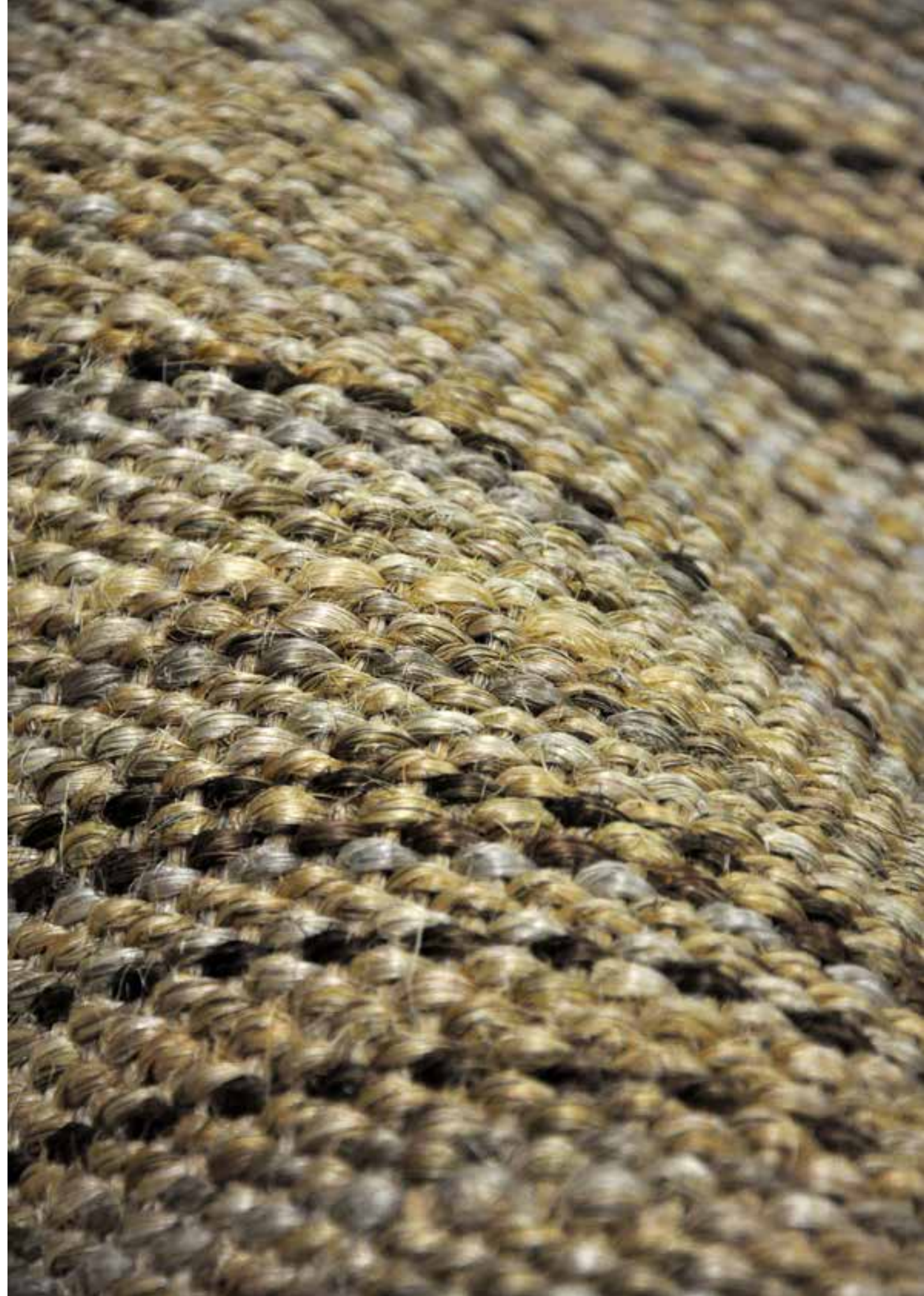




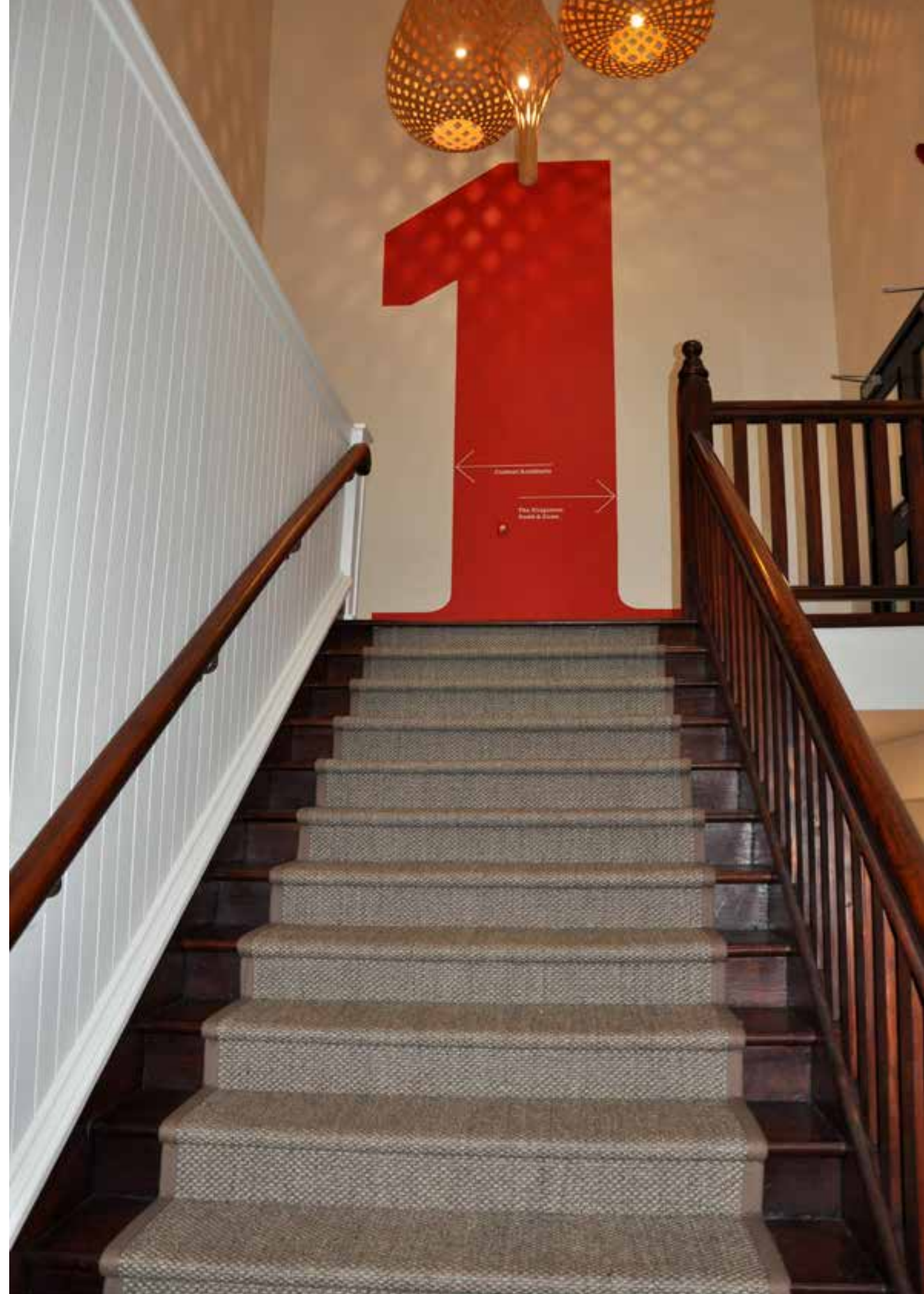
MEDIUM WEAVES

CALVADOS	38
CANNES	40
COIR	42
DIJON	44
LA ROCHELLE	46
LE MANS	48
LOURDES	50
LILE	52
ORLEANS	54
PROVENCE	56
RENNES	58
ROUBAIX	60
ST REMY	62

CALVADOS



CANNES



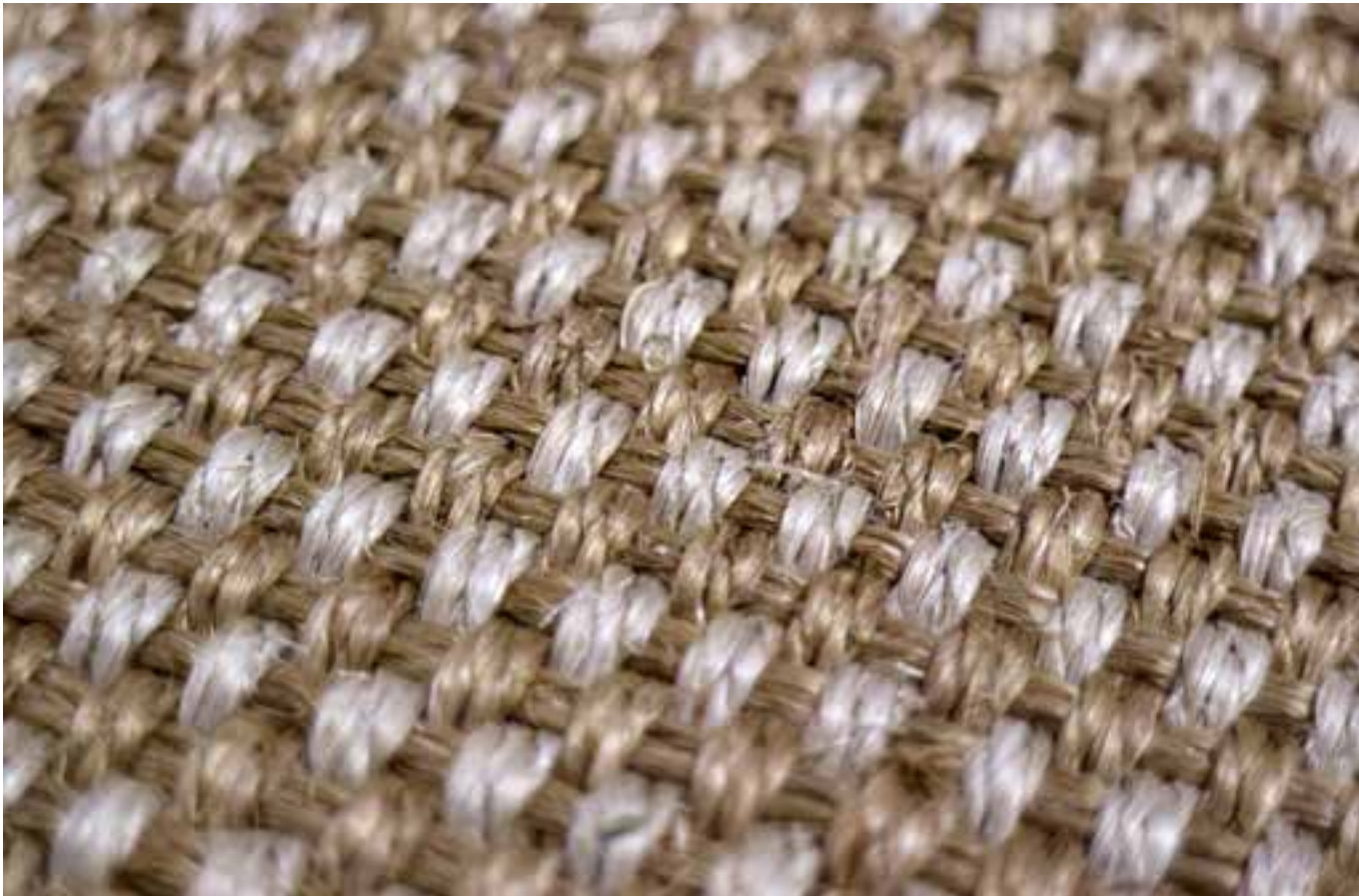
COIR



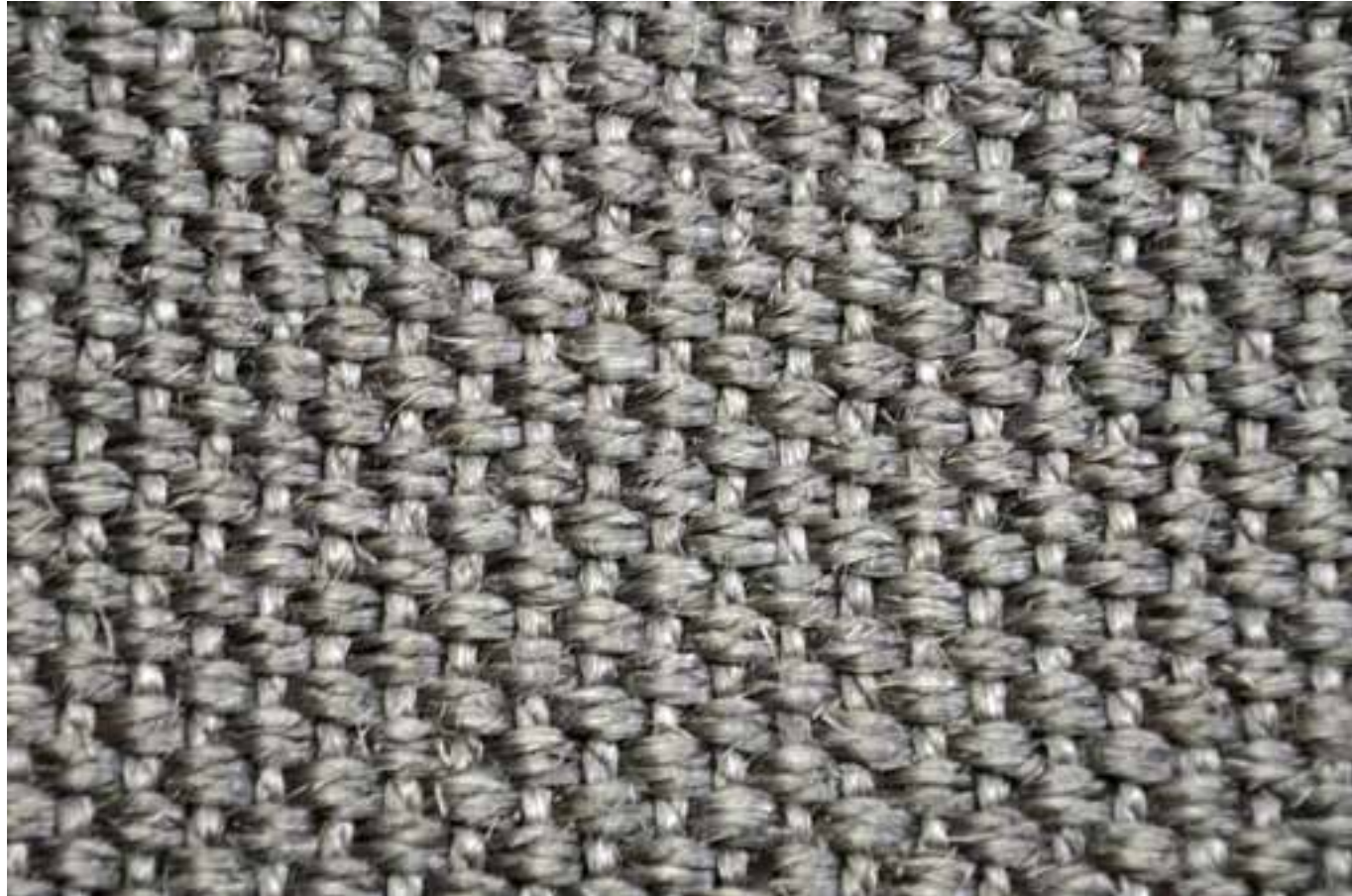
DIJON



LA ROCHELLE



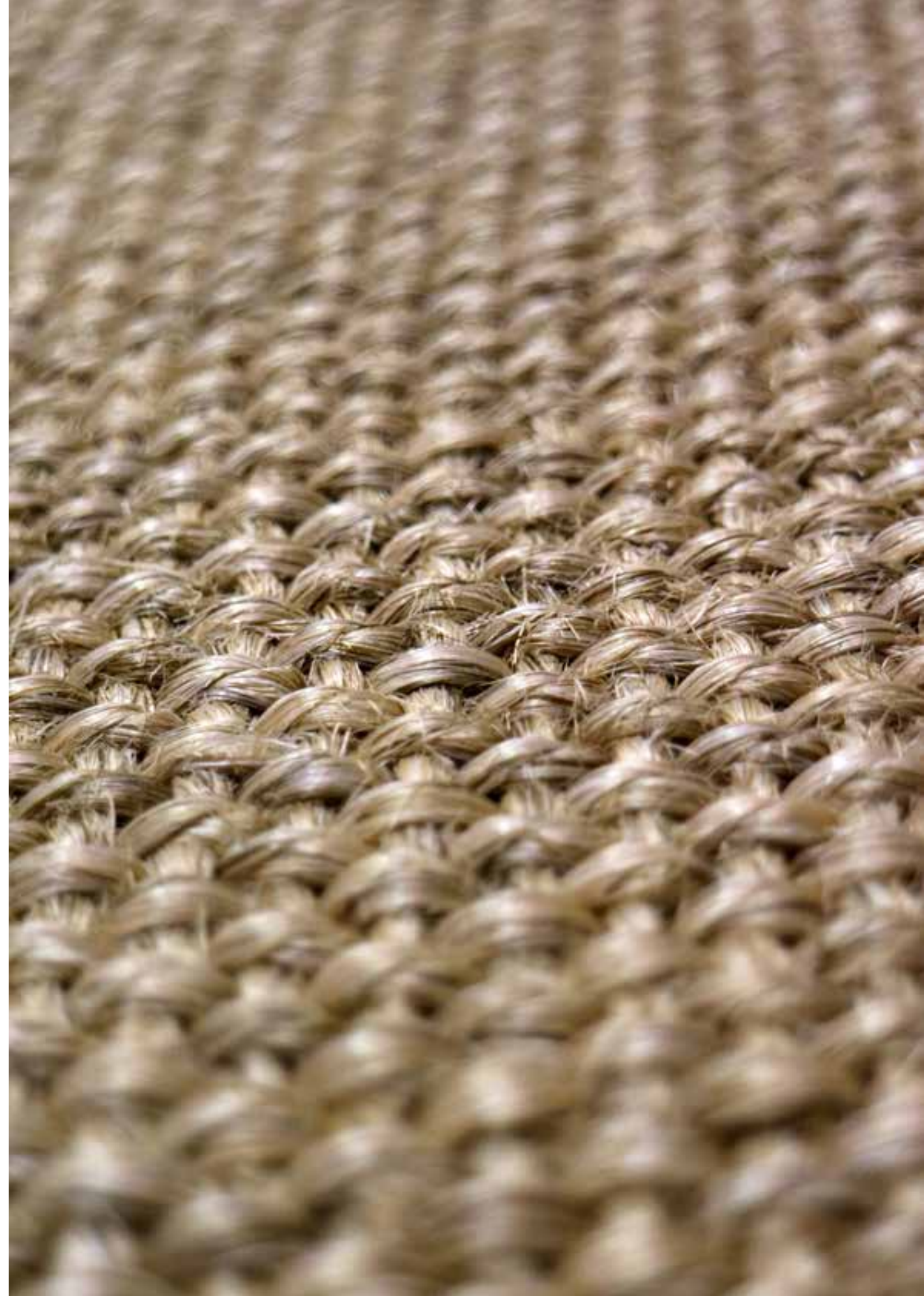
LE MANS



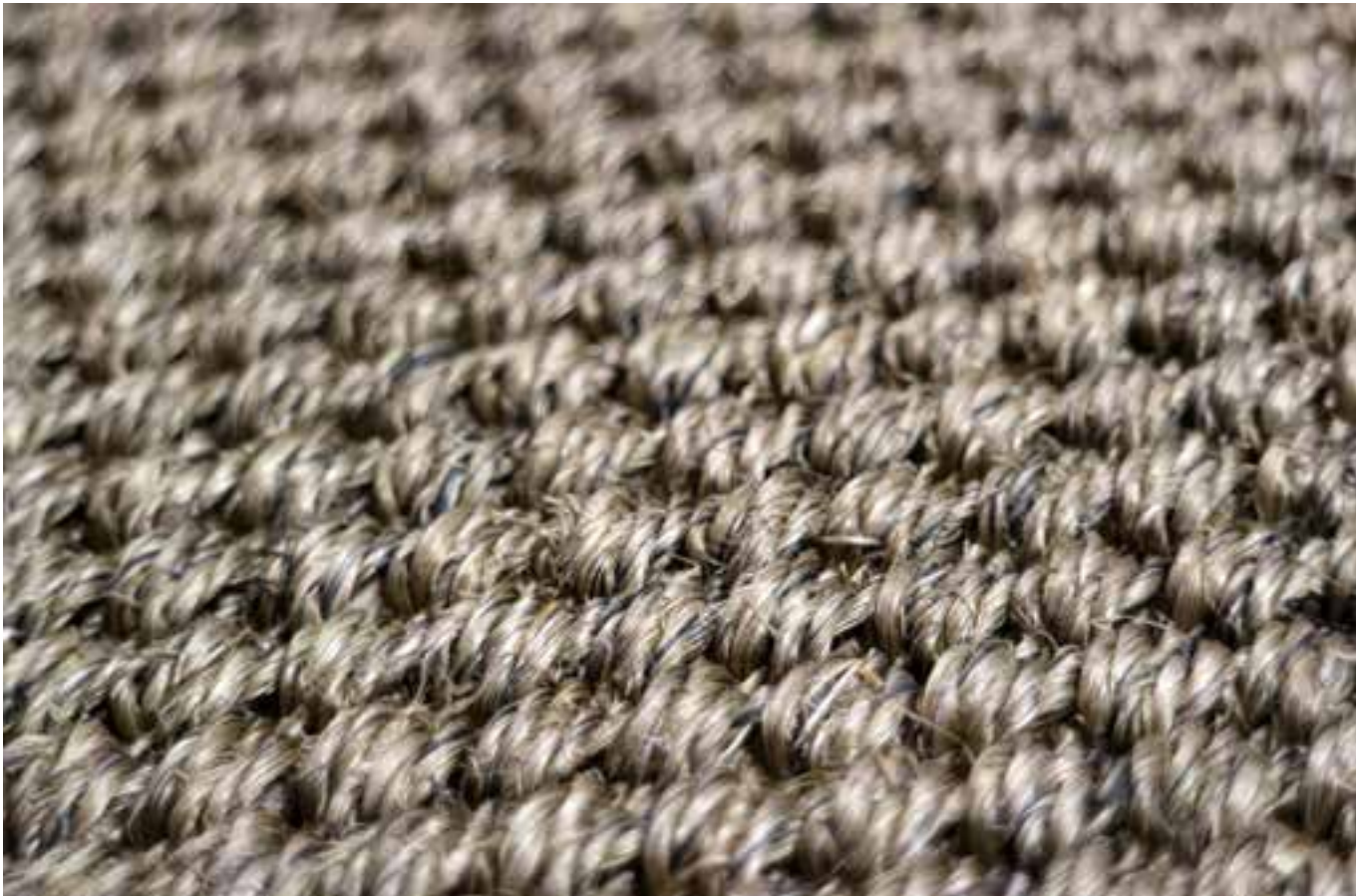
LOURDES



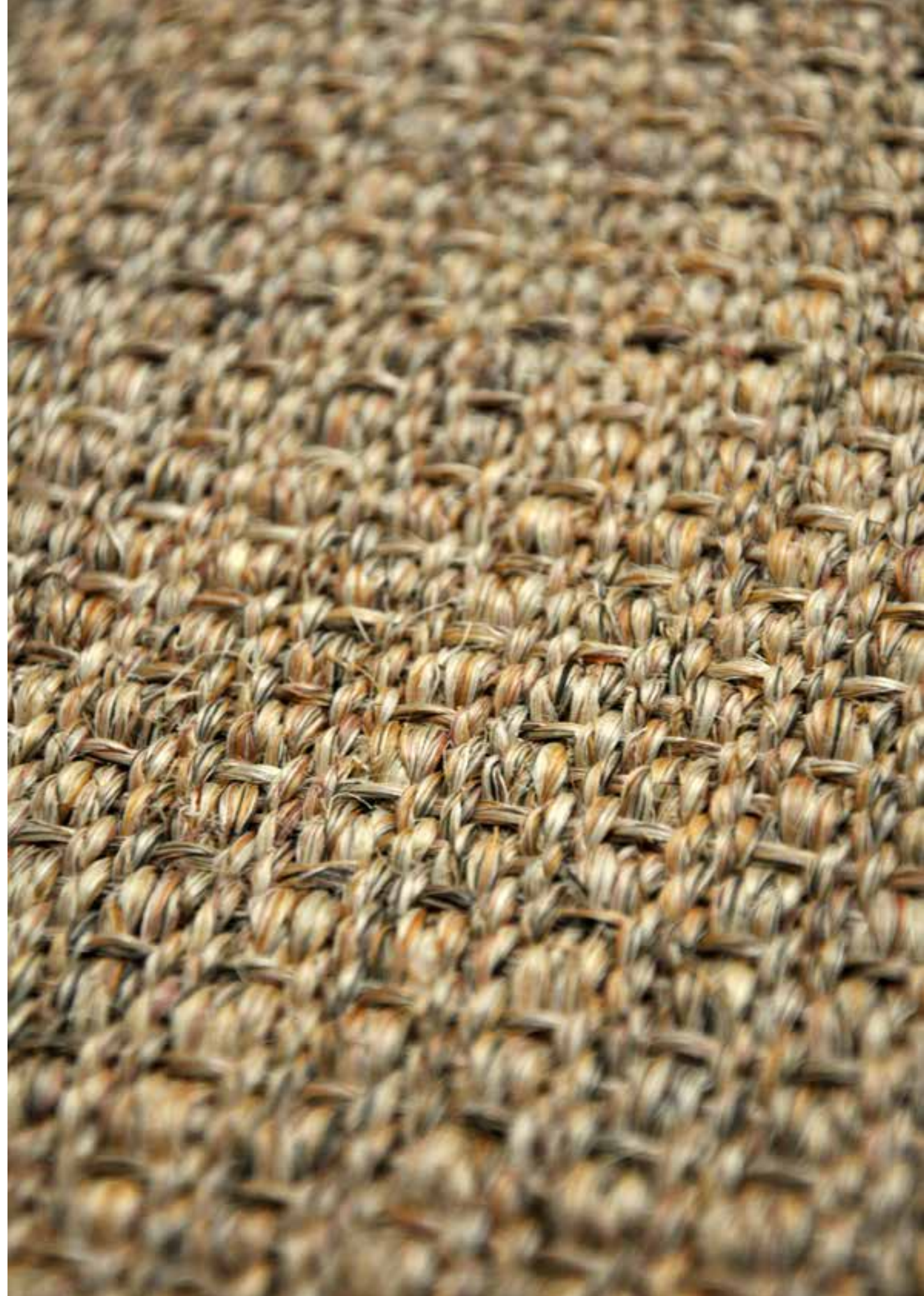
LILE



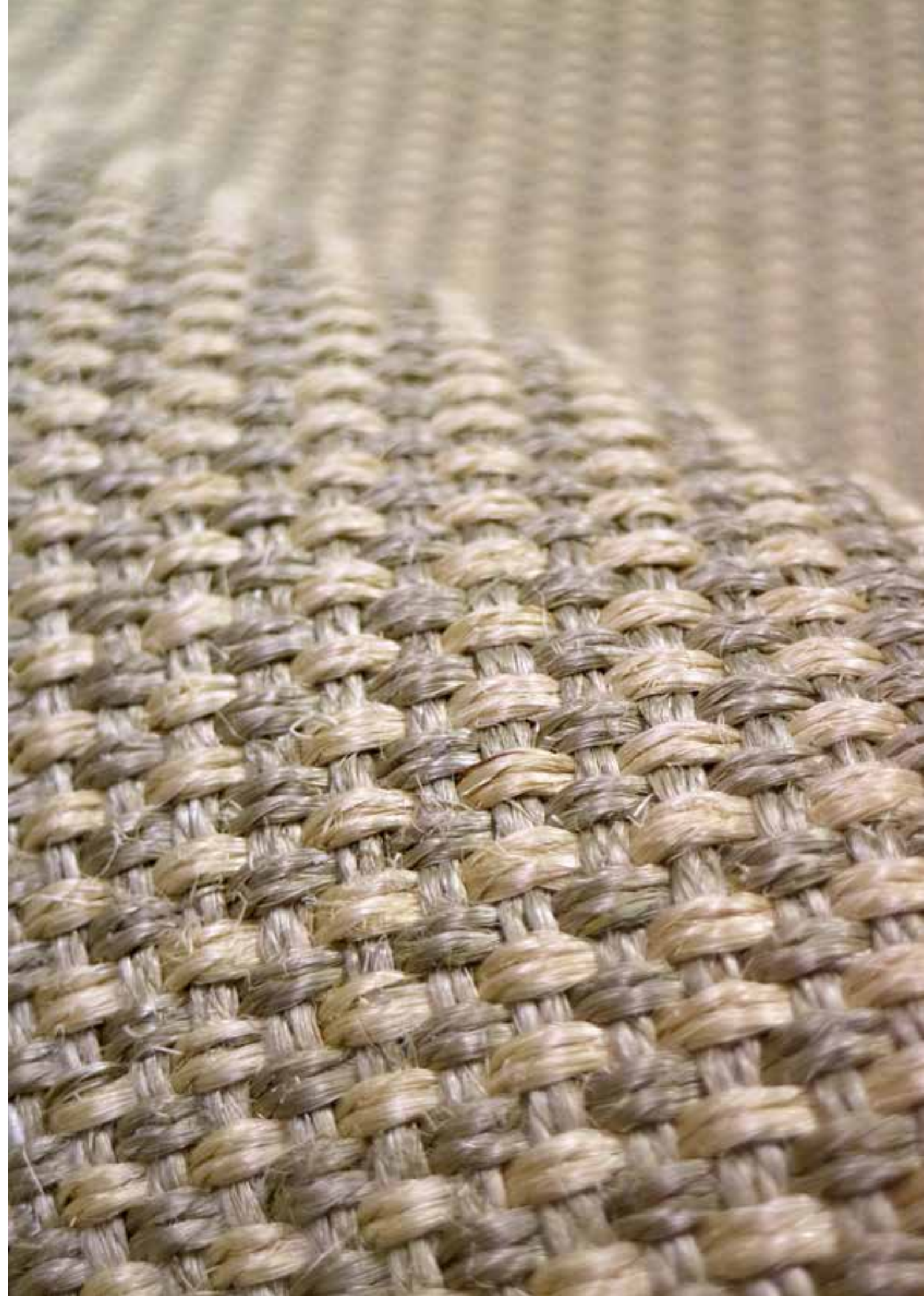
ORLEANS



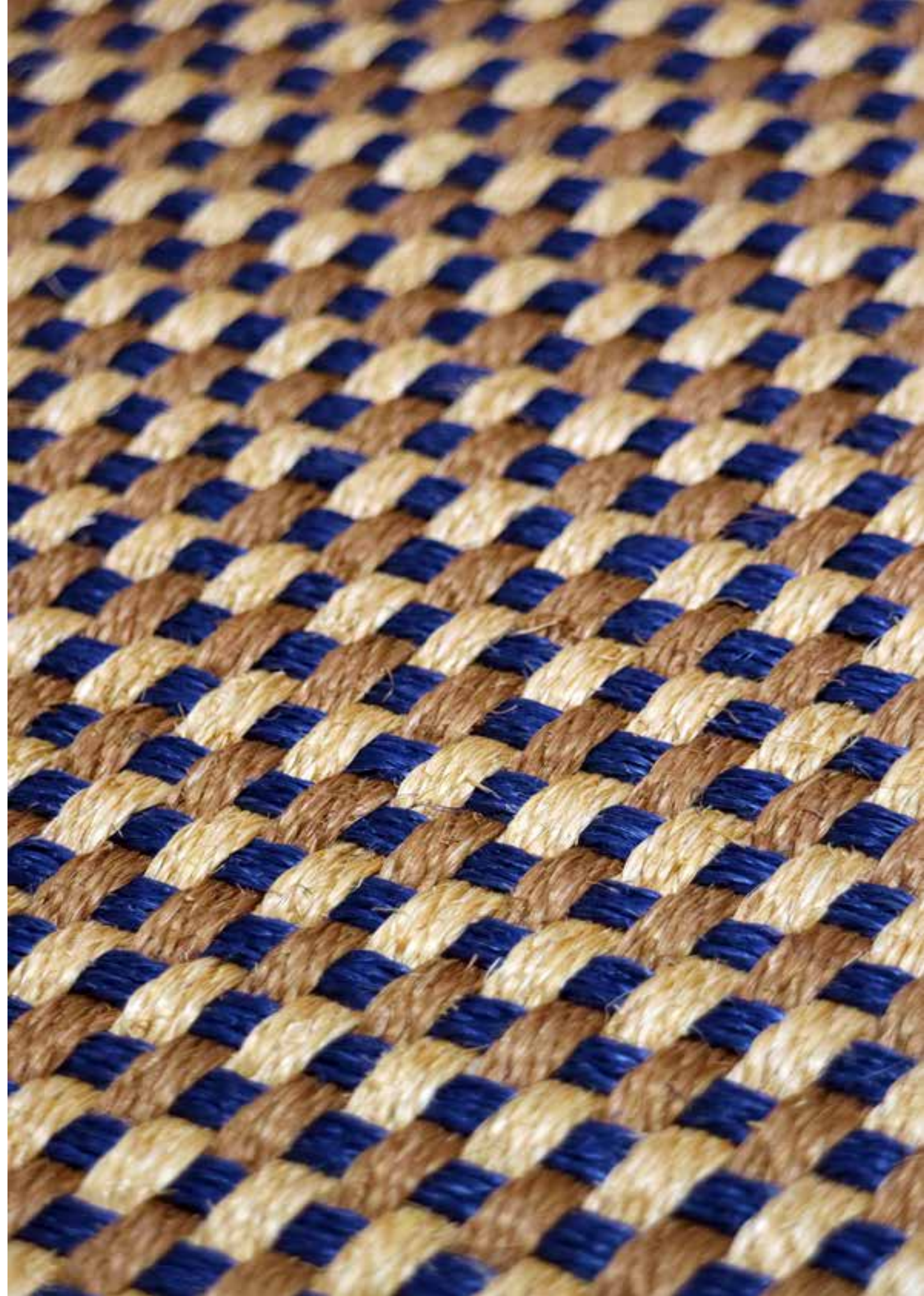
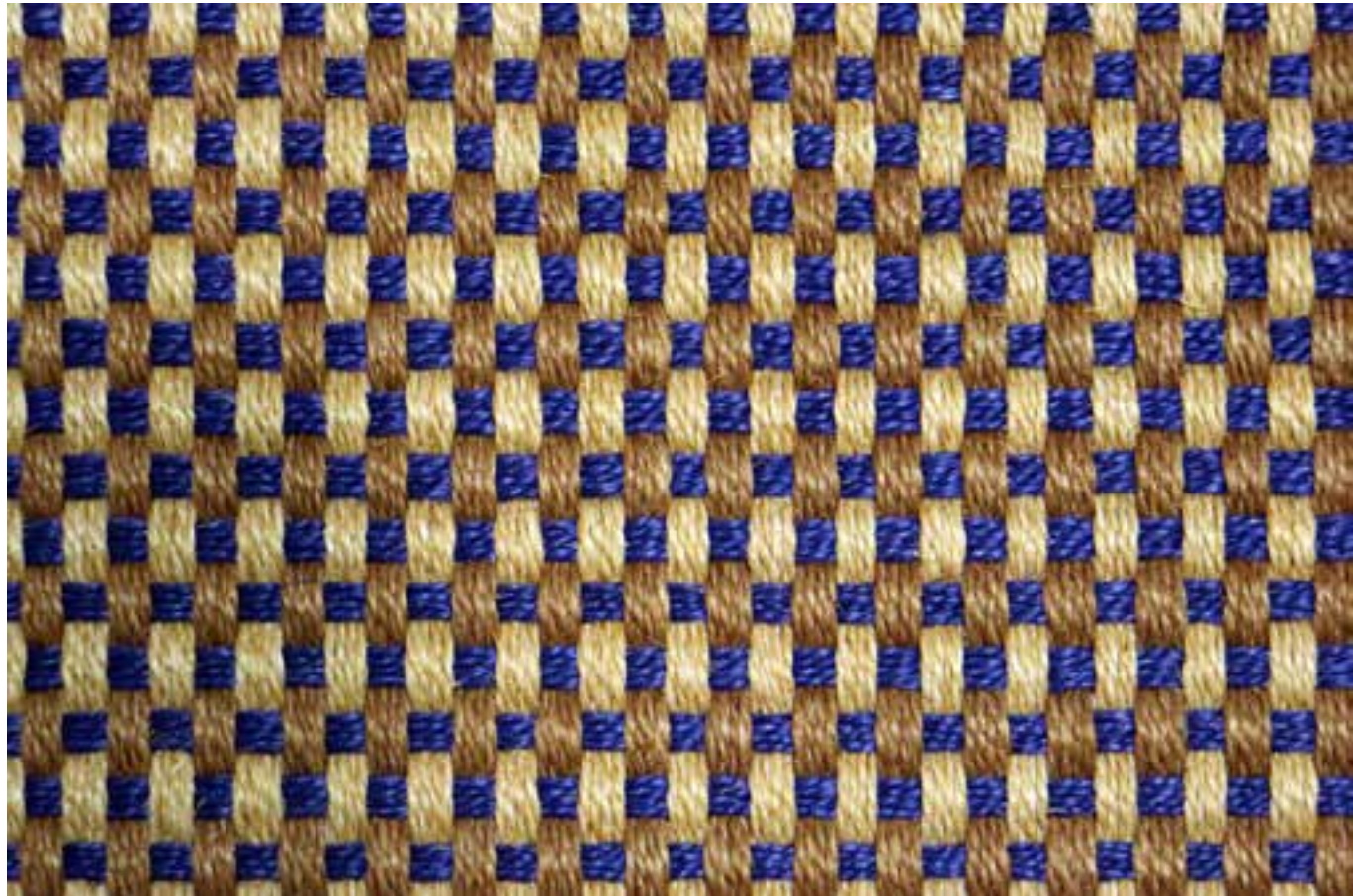
PROVENCE



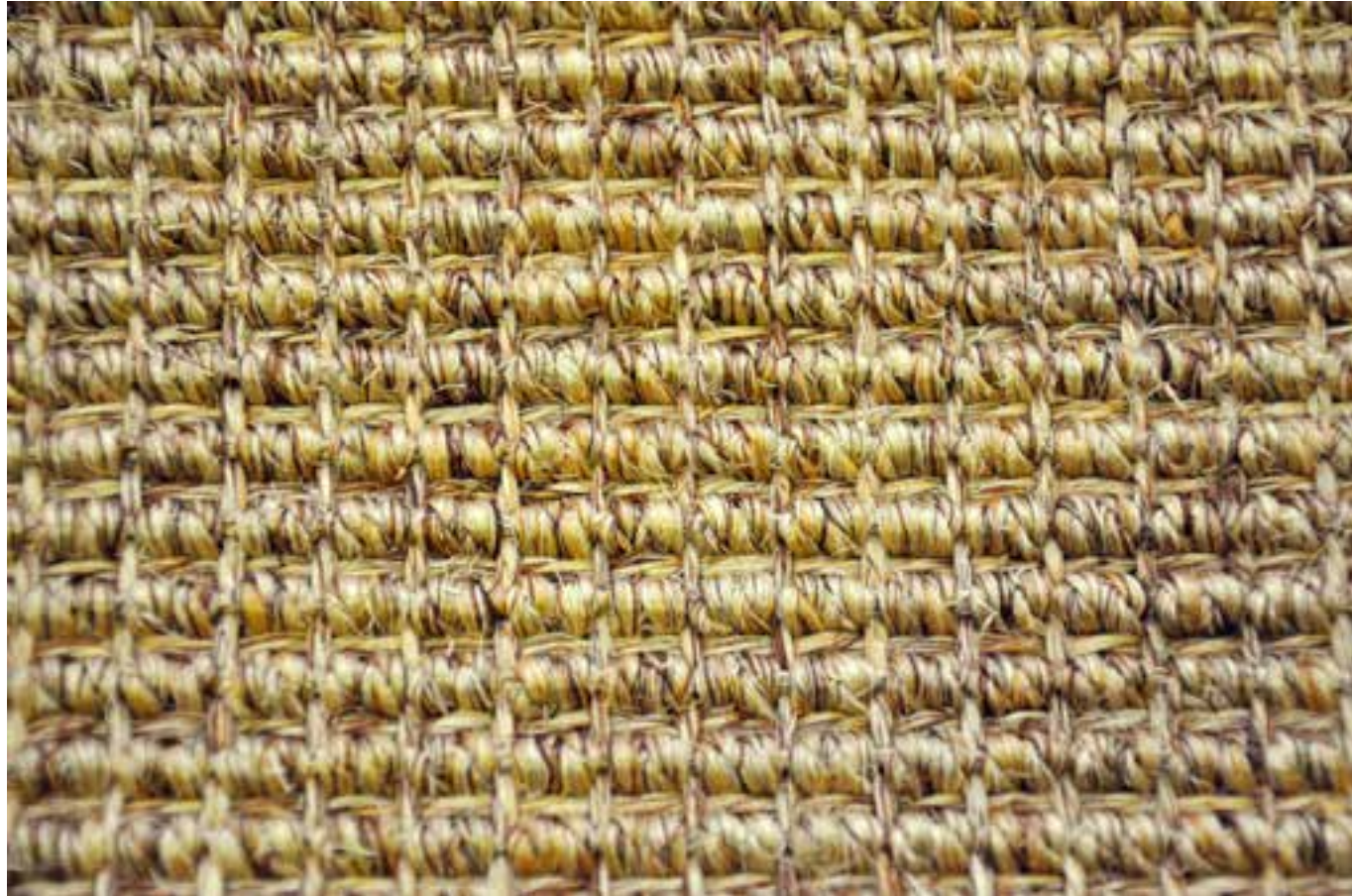
RENNES

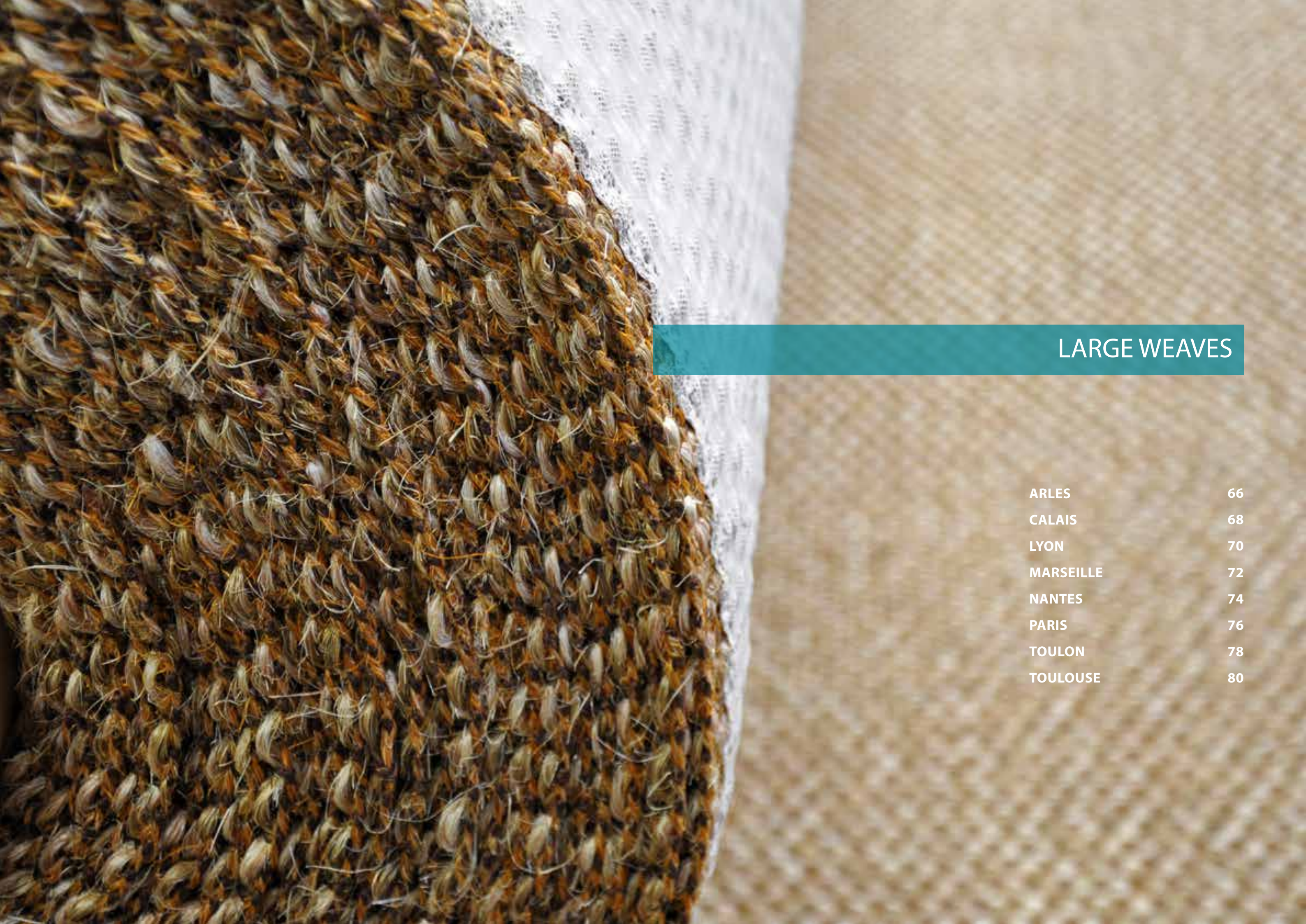


ROUBAIX



ST. REMY

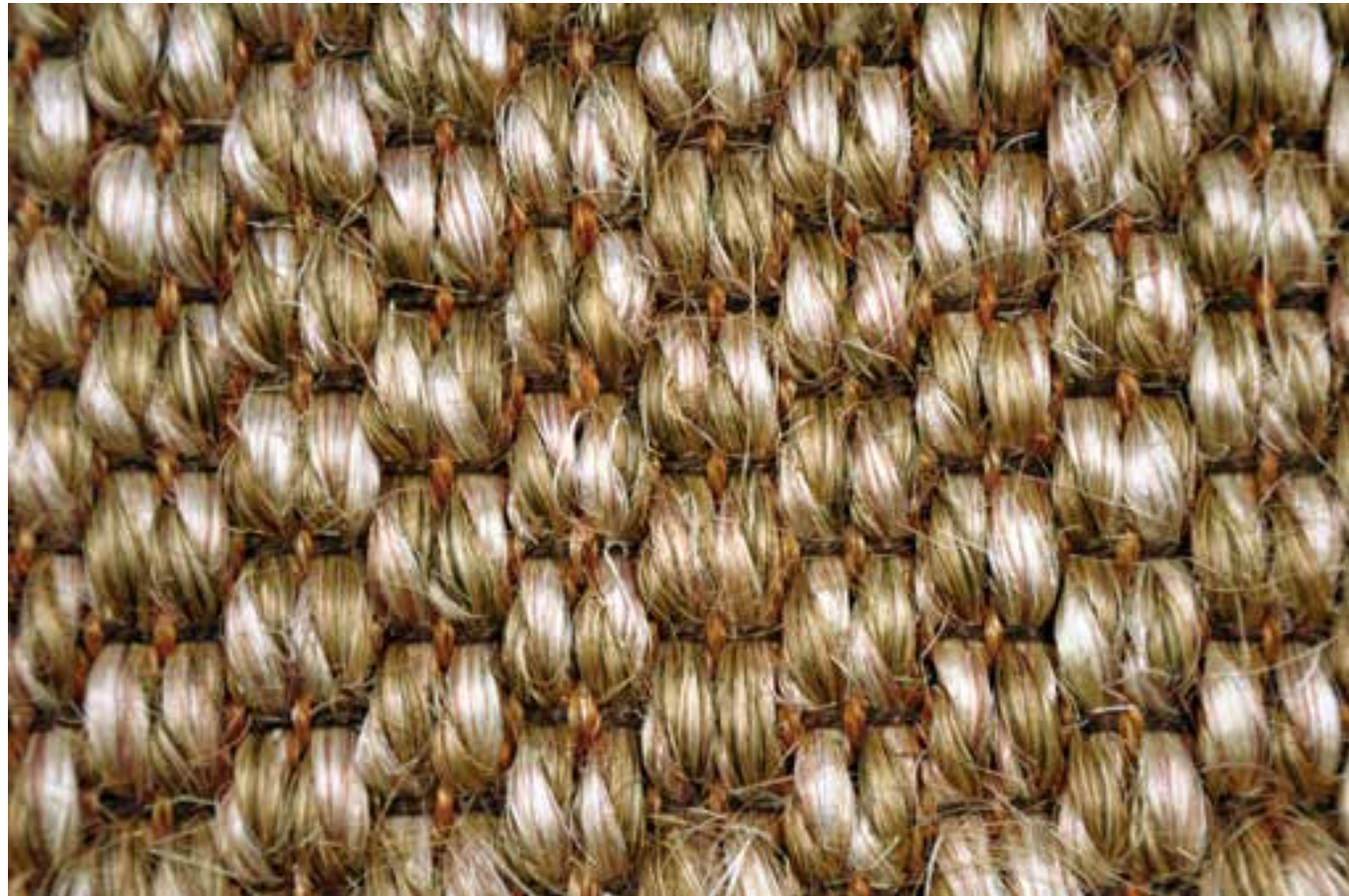




LARGE WEAVES

ARLES	66
CALAIS	68
LYON	70
MARSEILLE	72
NANTES	74
PARIS	76
TOULON	78
TOULOUSE	80

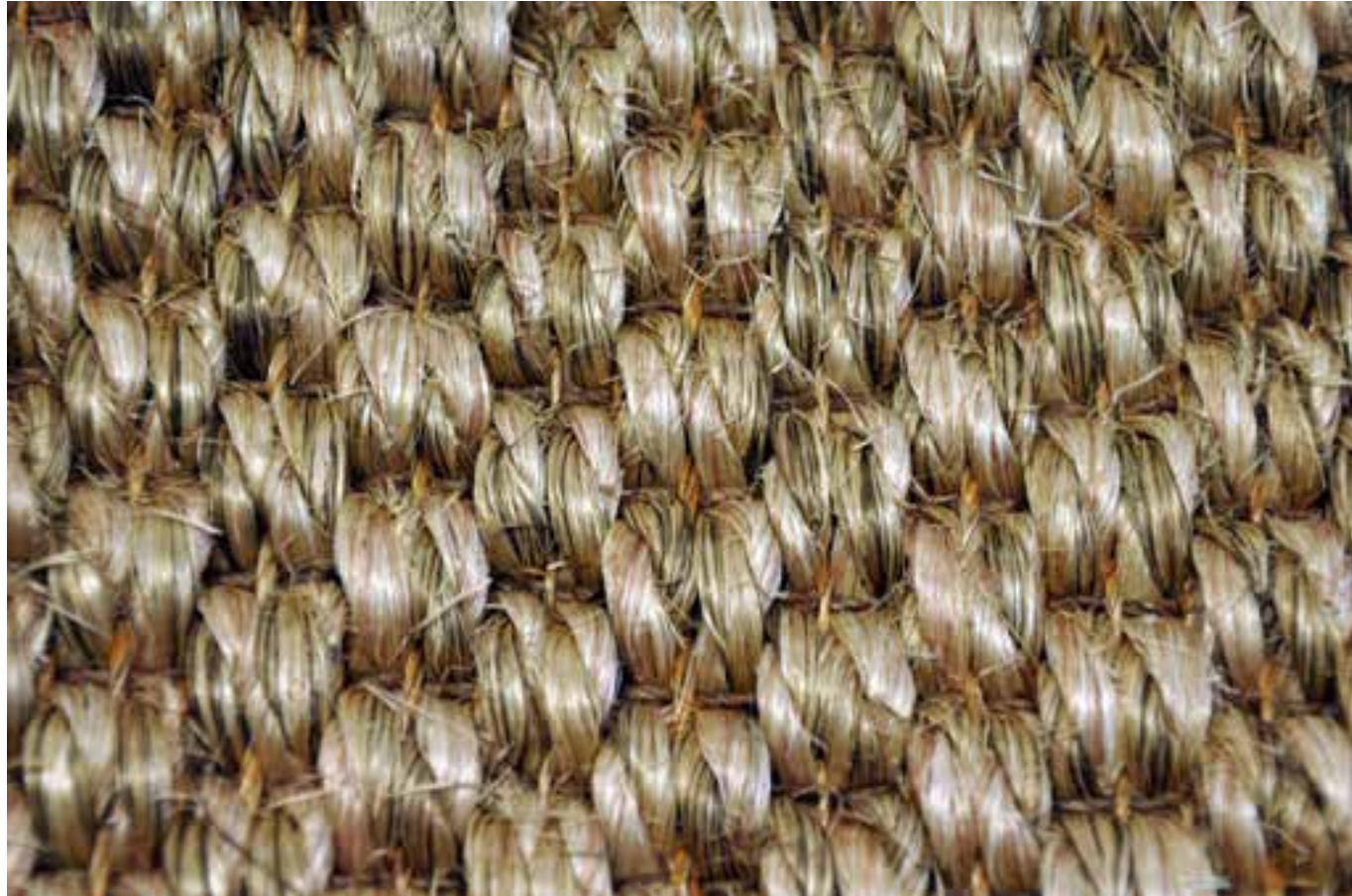
ARLES



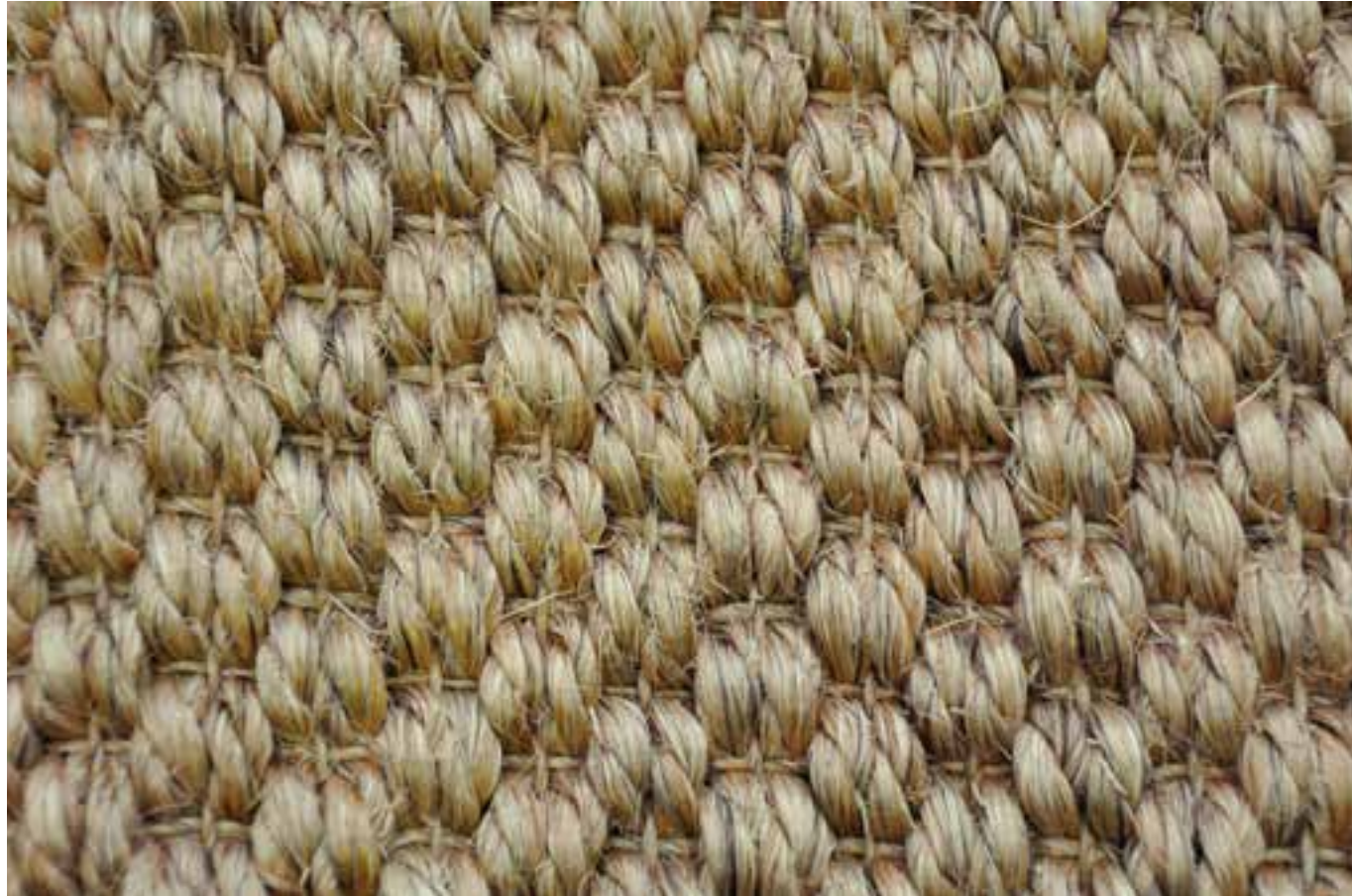
CALAIS



LYON



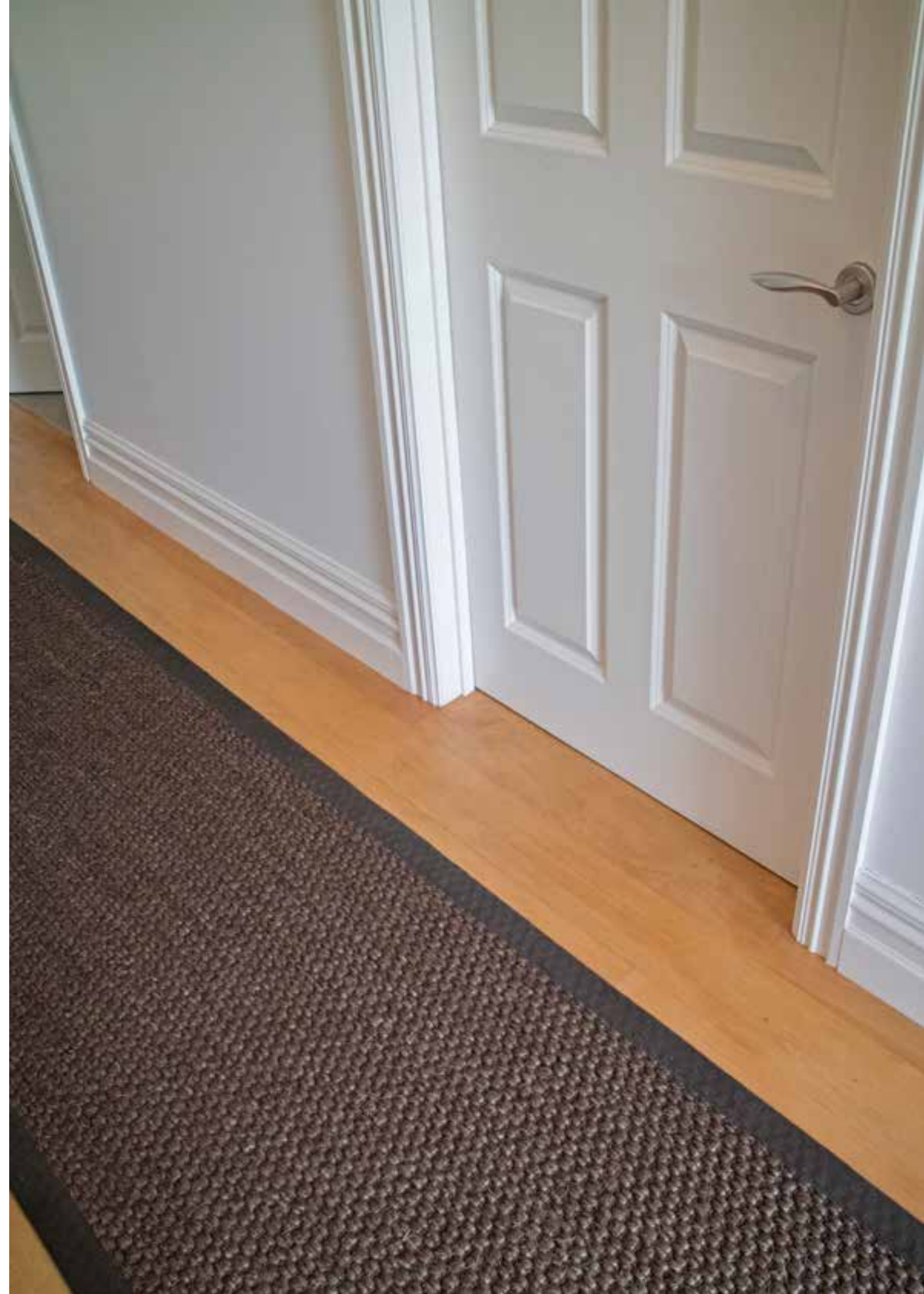
MARSEILLE



NANTES



PARIS



TOULON



TOULOUSE



BINDING SERVICE

All Source Mondial natural sisal can be readily bound into your own bespoke rug.

When it comes to binding a sisal rug there are a number of options available. The best option for you will often depend on the size of the finished rug, the scale of the sisal pattern and whether the binding is to be a feature of the rug or is to more discreet and simply enhance the sisal itself.

Source Mondial offers a number of binding finishes.

If you're after a bordered rug, we have an excellent selection of leathers, cottons, linens, jute, chenille, synthetics...

For a borderless finish we can offer our concealed edge binding. This finish is a self-turned edging and includes an underlay insert for added comfort and cushioning underfoot.

Whatever you'd like including sisal style, dimensions, binding finish or border fabric, our team will work with you to achieve the best possible result that meets with your usage, aesthetic and budget requirements.



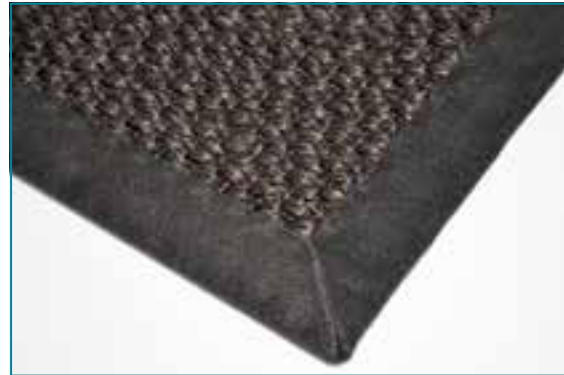
BINDING FINISHES



CHENILLE



JUTE



LINEN



COTTON



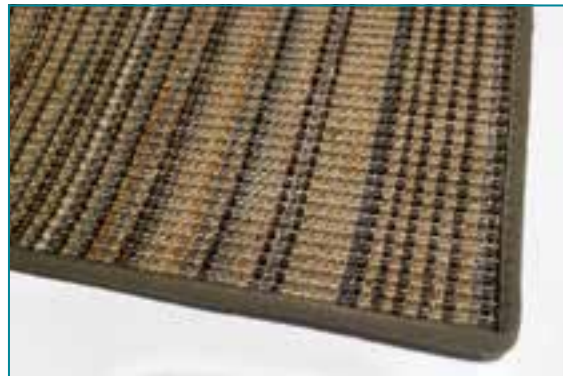
SYNTETIC



LEATHER



CONCEALED EDGE



NARROW TAPE



CARING FOR YOUR SISAL RUG

Natural sisal fibres have very unique characteristics, and care when maintaining and cleaning these will help retain their appearance, and also ensure their longevity. Cleaning your sisal should normally be left to a professional carpet cleaner, but there are however occasions where an immediate response is required.

MAINTENANCE

PROTECTION

Consider protecting your sisal from stain and UV damage.

Microseal treatment offers this protection, as well as mould & mildew prevention and flame retardant benefits. Microseal also assists with extending fibre life and appearance retention.

Avoid direct and continuous exposure to sunlight.

Consider drawing curtains/shades during times of high sun exposure.

PREVENTION

Where possible, introduce an obstacle to the transition of dirt from outside to your interior sisal. Options include the removal of shoes, or the installation of a door mat that collects soil and prevents the immediate transfer of extraneous dirt.

PLACEMENT

As sisal is derived from a natural plant fibre it is inherently absorbent.

It is important therefore that sisal is not placed in areas that are damp, where spills are likely to occur or where significant changes in humidity levels are likely to cause condensation.

VACUUMING – VACUUM, VACUUM, VACUUM!

The removal of dry soil by regular vacuuming is the foremost maintenance protocol. Regular and thorough vacuuming not only prevents soil stains, but also prevents damage to sisal fibres caused by the friction of imbedded dirt particles as they wear against the sisal pile from the pressure of foot traffic.

Vacuuming will also assist with the prevention of stains caused when liquid spills dissolve and then set dry soil accumulations in the fibres.

DO NOT use a rotating brush attachment, as this can cause damage to the sisal fibres by matting these.

Take care when vacuuming a bound sisal rug. Holding a vacuum on the border/binding, or pushing it against the direction of the border/binding can cause damage.



ROTATION

Occasional rotation of your sisal rug will help diminish uneven UV fading and/or traffic wear.

CLEANING

Natural sisal fibres are sensitive to staining from liquid (including water) and solid spills. As such, all spills should be treated quickly to prevent permanent staining.

NOTE: As sisal is sensitive to liquids, DO NOT flood a spill with water – this can spread the stain, and cause permanent fibre damage/staining/shrinkage.

SPILLS – SPOT CLEANING

- * Remove any excess solids/liquids from the pile using a blunt edge knife or a spoon;
- * Where any remaining spill consists of dry solids, use a vacuum cleaner to thoroughly remove;
- * Blot away any remaining liquid spill with dry absorbent white paper towels or white cloth;
- * Work/blot from the outside of the spill towards the centre to avoid spread;
- * DO NOT scrub or rub the spill, or use circular motions. This can work liquid deeper into the fibres, making the spill more likely to stain & spread;
- * Blot the spill with fresh dry paper towels/cloth until the spill has been totally absorbed and is dry to the touch;
- * If a stain remains, use a fresh paper towel/cloth very slightly dampened with a solution of 2/3rd water/1/3rd white vinegar and apply pressure to the pile to dampen the stain. Then repeat blotting with fresh dry towels/cloth as necessary until the area is dry to the touch. Be patient, and DO NOT scrub, rub or use circular motions, or flood the stain;
- * Where appropriate to further extract moisture from the spill, assist the drying time with a fan;
- * If stain persists, seek the advice or services of a professional carpet cleaner.

PROFESSIONAL CLEANING

- * Where a professional cleaner is engaged to clean your sisal, be sure to check that they are well trained and experienced in cleaning sisal. Source Mondial would be pleased to make a recommendation;
- * NEVER steam clean or wet shampoo your sisal rug. A dry cleaning process is recommended.

CLEANING SOLUTIONS

HOST DRY CLEANING KIT

Source Mondial recommends using Host Dry Carpet Cleaner. This product is all natural and contains a balanced blend of moisture, detergent and a small amount of safe-to-use solvents.



Host dissolves, absorbs and traps grease, oily dirt, spots and odours.

Unlike wet cleaning methods Host Dry Carpet Cleaner does not leave any sticky, soapy residue behind to attract dirt and cause re-soiling - and spots won't wick back. Host is safe for people and pets and can be used on all types of fibres including wool and sisal.

MICROSEAL WONDERSPOT Cleaner & Chamois

Used conservatively, Wonderspot Cleaner can be used to assist with spot cleaning. The chamois is excellent for soaking up spills.







SOURCE MONDIAL
CARPET | RUGS | SISAL



+64 9 377 3068 | 70 Stanley Street, Parnell, 1010
0800 767 847 | MDC - 323 Madras St, 8013 | Christchurch
P.O. Box 31741 Milford, 0741 | Auckland, New Zealand
sourcemondial.co.nz | sisal.co.nz